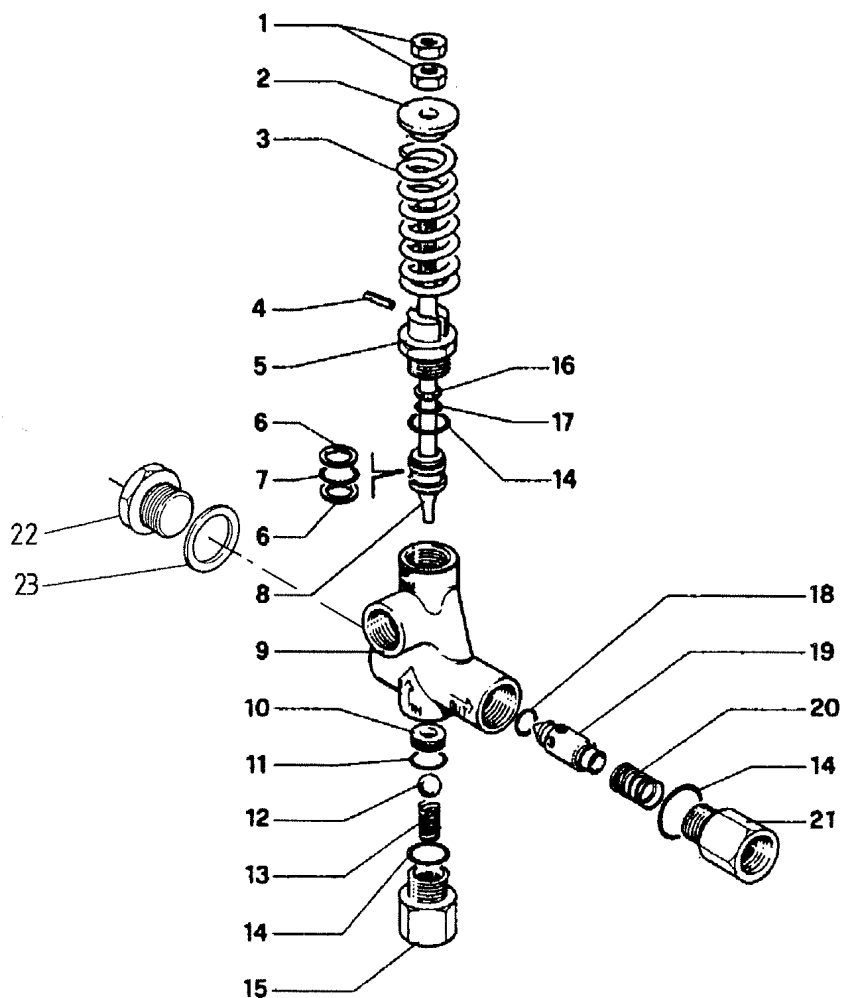


**Ersatzteilliste  
Spare Parts List**

**UL 181/280REV  
UL 181/150REV**

Lfd. Nr. Item No.	Stück No. Off	Best.-Nr. Code No.	Benennung	Description
1	2	12.6261	Sechskantmutter	Hexagon Nut
2	1	12.6262	Zentrierscheibe	Centring Disc
3	1	12.6259	Druckfeder UL 181/280	Pressure Spring UL 181/280
3	1	12.6389	Druckfeder UL 181/150	Pressure Spring UL 181/150
4	1	12.6264	Stift	Pin
5	1	12.6284	Führungsstopfen	Guide Plug
•6	2	12.6266	Stützring	Support Ring
•7	1	12.6285	O-Ring	O-Ring
8	1	12.6286	Kolbenstange mit Kolbenkörper	Piston Rod with Piston Body
9	1	12.6287	Gehäuse	Casing
•10	1	12.6288	Sitz	Seat
•11	1	12.6289	O-Ring	O-Ring
•12	1	12.6296	Kugel	Ball
13	1	12.6297	Bypassventilfeder	Bypass Valve Spring
•14	3	13.1935	O-Ring	O-Ring
15	1	12.6304	Anschlußstutzen G1/2	Connecting Branch G1/2
•16	1	12.6274	Stützring	Support Ring
•17	1	12.6305	O-Ring	O-Ring
•18	1	12.6306	O-Ring	O-Ring
19	1	12.6307	Rückschlagventilkegel	Cone-Kick-Back Valve
20	1	12.6308	Rückschlagventilfeder	Kick-Back Valve Spring
21	1	12.6298	Anschlußstutzen G1/2	Connecting Branch G1/2
22	1	12.6282	Stopfen G1/2	Plug G1/2
23	1	12.6334	Dichtung	Seal
•	1	12.6258	Rep. Satz	Repair Kit



**SPECK - KOLBENPUMPENFABRIK**

Otto Speck GmbH & Co. KG · Postfach 1240 · D-82523 Geretsried  
Tel. (08171) 62930 · Telefax (08171) 629399