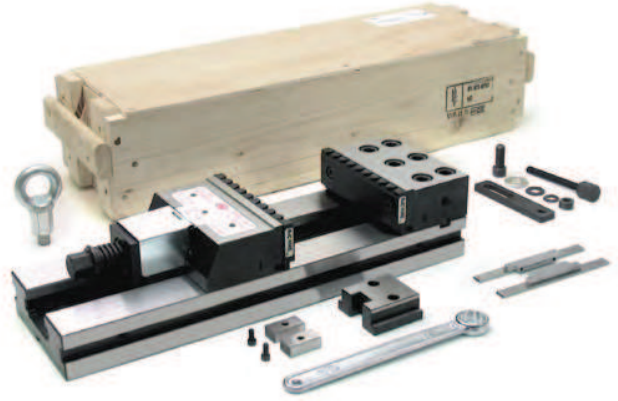
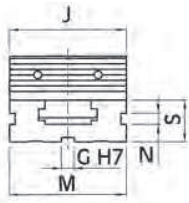
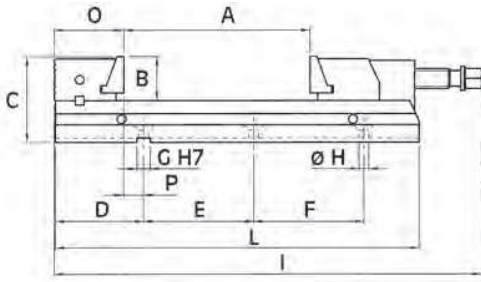


OML PRECISION VICE TCT - C6310

TCT clamping equipment complete with wrench, work stop, rigid slide way, floating slide way (for raw workpiece), pair of positioning keys h 6 (optionally), pair of CLAK parallels, cover for screw protection, eye bolt for lifting. Wooden packing case.
Supplied with Sintergrip standard jaw pair.

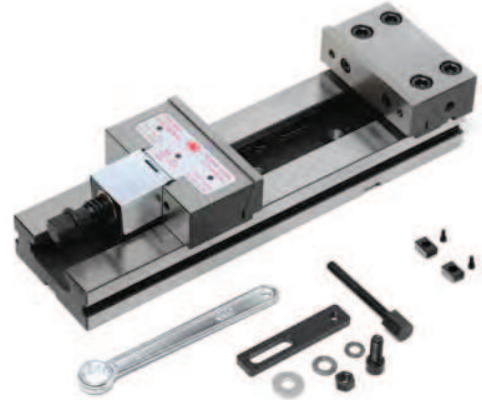
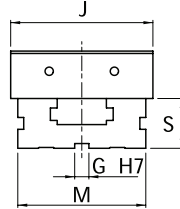
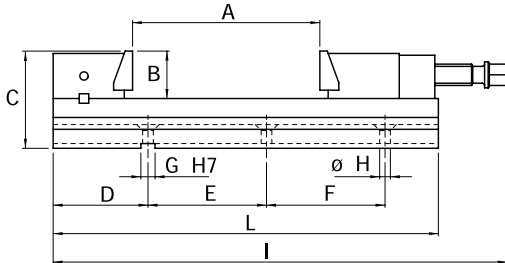


Tech. Code	C02 Euro	Mod. mm	A mm	B mm	C mm	G mm	H mm	I mm	J mm	L mm	M mm	N mm	O mm	Go mm	S mm	Weight kg
C6310110100	1.278,00	110x100	100	40	78	12	9	338	110	280	110	10	63	18	38	11.5
C6310110150	1.350,00	110x150	150					388		330						12.5
C6310150200	1.556,00	150x200	200	50	98	18	12.5	481	150	413	150	13	85	30	48	27
C6310150250	1.620,00	150x250	250					531		463						29
C6310150300	1.901,00	150x300	300					588		520						31.5
C6310200250	2.472,00	200x250	250	70	138			647	200	560	200	15.5	123	27	68	74
C6310200300	2.630,00	200x300	300					697		610						78

OML CLAMPING VICE MC - C6320

MC clamping equipment complete with wrench, work stop, rigid slide way (floating slide way for raw workpiece on request), pair of positioning keys h 6 (optionally), pair of CLAK parallels, cover for screw protection.
 Supplied in cardboard box.

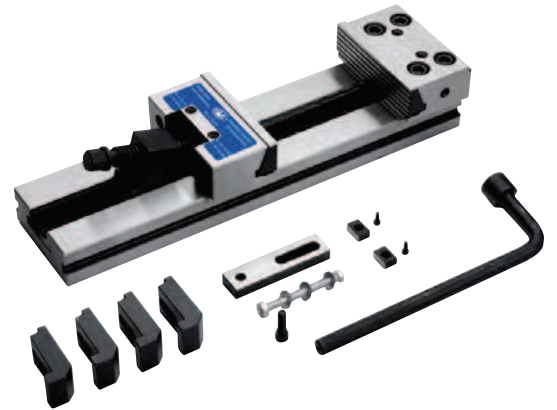
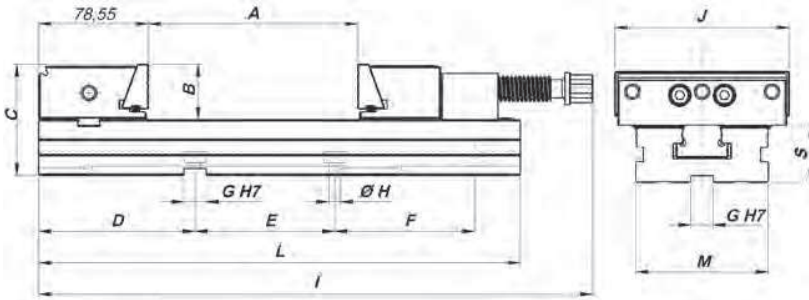
Supplied with Sintergrip standard jaw pair.



Tech. Code	C02 Euro	Mod. mm	A mm	B mm	C mm	G mm	H mm	I mm	J mm	L mm	M mm	S mm	Weight kg
C6320150200	1.468,00	150x200	200	50	102	18	12.5	482	150	415	128	52	25.5
C6320150250	1.521,00	150x250	250					532		465			27.5
C6320150300	1.772,00	150x300	300					588		520			30
C6320200300	2.369,00	200x300	300	70	136			656	200	570	168	66	66

OML CLAMPING VICE LC - C6325

LC clamping equipment complete with wrench, rigid slide way, work stop, pair of positioning keys h 6, cover for screw protection, 4 clamps. Supplied in cardboard box.



Tech. Code	C02 Euro	A mm	B mm	C mm	D mm	E mm	F mm	G mm	H mm	I mm	J mm	L mm	M mm	S mm	Weight kg
C6325125150	705,00	150	40	80	111	100	100	16	8.5	410	125	345	95	40	13
C6325150200	853,00	200	50	100	122.5				12.5	500	150	420	125	50	26
C6325150300	1.041,00	300								600		520			
C6325200400	2.036,00	400	65	135	145				780	200	695	170	70		

OML GENIUS VICE- C6331

Genius is a clamping system engineered for 5-axis machining centers, thanks to its clamping repeat accuracy, it guarantees high-precision performances.

Genius clamping units **are provided complete with SinterGrip jaws**, the innovative clamping system with hard metal inserts, enabling the workpiece grip with only 3,5 mm clamping

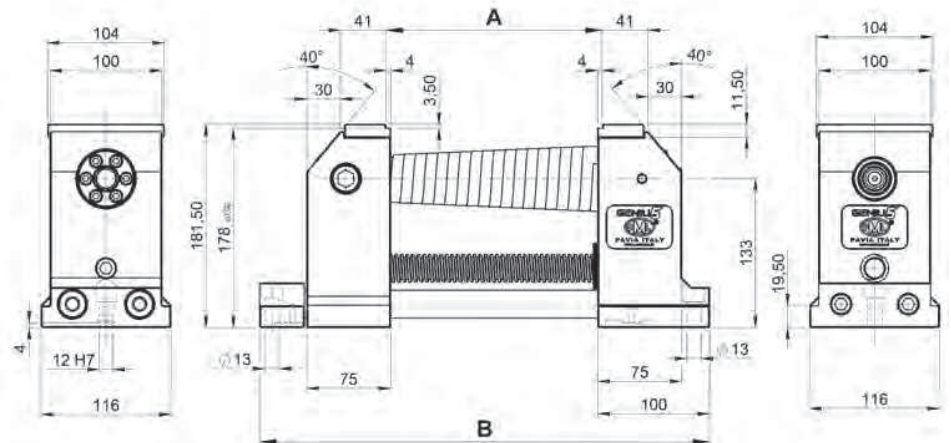
This makes Genius the ideal system in case of 5-axis machining centers.

Its innovative shear clamping system provides a clamping force (up to 40kN) which is functionally directed on the clamped workpiece.

Locking can be performed in a single step, up to 200 mm.

Its jaws travel along cemented as well as rectified shafts, instead of surfaces, therefore enabling a faster and more accurate positioning on axis with the machine centre point. Standard provided with 12x18 mm keys.

Tech. Code	C02 Euro	A mm	B mm	Weight Kg
C6331100	1.990,00	100	312	23
C6331200	2.047,00	200	412	25



OML SINTERGRIP LOCKING SYSTEM - C6335

Sintergrip is a safe locking method conceived to avoid work piece deformations. The system comprises two different elements: a pair of jaws and a set of carbide inserts featuring a special patented profiling so to efficiently lock the work piece avoiding any need for premachining or special clamping.

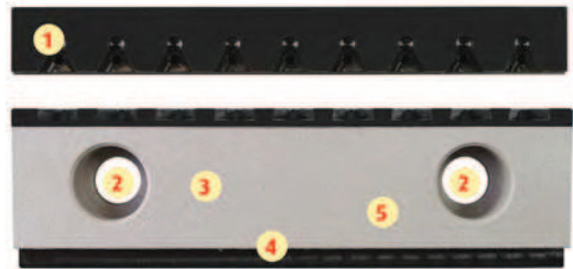
Sintergrip also allows to lock for as few millimeters as possible the work piece in the clamping unit (3,5 mm grip) therefore enabling:

- complete item machining in a single phase (especially for 5-axis units)
- a cost-effective approach to the use of raw materials, especially when these have a significant impact on the costs (aluminum, titanium, etc.)

ALL IN ONE

1. Shape of the self-centering seat of the inserts with dovetail interlocking
2. Fixing holes to the vise
3. Tungsten carbide coating for better grip in the second operation
4. Seat for Clak system
5. Made on steel with tensile strength ~ 1.080 N/mm² + nitriding.

Tech. Code	C02 Euro	Description
C6335ALL150	368,00	Pair of jaws TC/MC 150 ALL IN ONE
C6335ALL200	536,00	Pair of jaws TC/MC 200 ALL IN ONE
C6335STD150	327,00	Pair of jaws TC/MC 150 STANDARD
C6335STD200	442,00	Pair of jaws TC/MC 200 STANDARD



OML SINTERGRIP INSERTS - C6336

SinterGrip inserts are made in ISO P30:P35 carbide PVD-method coated.

The cutting edges of its teeth is patented, the lower angle being greater than the upper one, jointed by a special cone-shaped insert section, generate two ideal thrust forces ensure a pull-down effect on the clamped workpiece, allowing a decreased clamping force for significantly reduced deformation phenomena and vibration risks.

Tech. Code	C02 Euro	Description
C6336ACC	224,00	Set of 10 Sintergrip STD inserts for steel
C6336ALU	224,00	Set of 10 Sintergrip STD inserts for aluminum
C6336TEMP	259,00	Set of 10 Sintergrip STD inserts for tempered steel






By 

Watch the video

MILLING ON MACHINE

in action on




Discover the range of the products in **CHAPTER C**

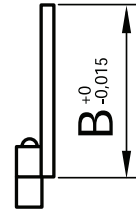
OML CLAK QUICK CHANGE MODULAR FLAT PARALLELS - SET OF 6 PAIRS - C6340

Set of 6 parallel pairs.
Exclusive quick change modular parallel system.

Advantages:

- Allows quick change of parallel jaws
- Eliminates clamps and locks thanks to a self-lock system.
- Precision maintenance

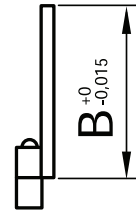
All parallel or jaw CLAK systems can be used on both the TC range and the MC range.



Tech. Code	C02 Euro	For models	B mm
C6340SET150	475,00	TC 150x.../MC 150x...	20 - 25 - 30 - 35 - 40 - 45

OML CLAK QUICK CHANGE MODULAR FLAT PARALLELS - SET OF 10 PAIRS - C6345

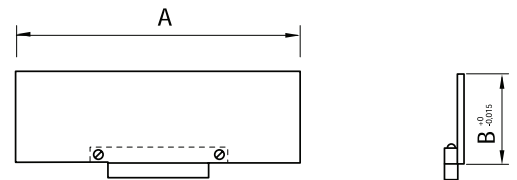
Set of 10 pairs of flat parallels.



Tech. Code	C02 Euro	For models	B mm
C6345SET150	597,00	TC 150x.../MC 150x...	10 - 15 - 20 - 25 - 30 - 35 - 40 - 43 - 45 - 47
C6345SET200	704,00	TC 200x.../MC 200x...	20 - 25 - 30 - 35 - 40 - 45 - 50 - 55 - 60 - 65

OML CLAK QUICK CHANGE MODULAR FLAT PARALLELS - C6375

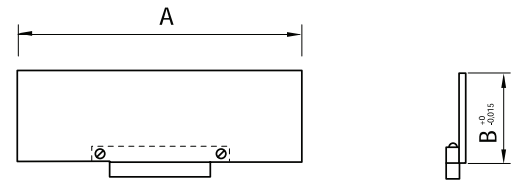
Flat parallels A = 146



Tech. Code	C02 Euro	B mm	A mm	C mm	For models
C637512	121,00	12	146	3	TC 150x... MC 150x...
C637515	121,00	15			
C637520	121,00	20			
C637525	121,00	25			
C637535	121,00	35			
C637540	121,00	40			
C637543	121,00	43			
C637545	121,00	45			
C637547	121,00	47			

OML CLAK QUICK CHANGE MODULAR FLAT PARALLELS - C6380

Flat parallels A = 196



Tech. Code	C02 Euro	B mm	A mm	C mm	For models
C638060	145,00	60	196	4	TC 200x... MC 200x...
C638065	145,00	65			



SAFETY EQUIPMENTS

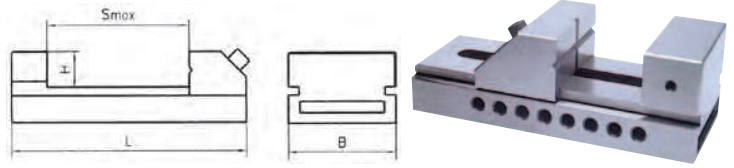
Discover the products

CHAPTER K

LTec PRECISION VICE - C6396

Quick-lock precision vice, tempered and ground steel. Clamping through hexagonal wrench. Ideal for grinding, milling, measuring and electro discharge machines. V-jaws for a reliable grip.

Parallel error: ± 0.005 mm / 100 mm
Orthogonality error: ± 0.005 mm

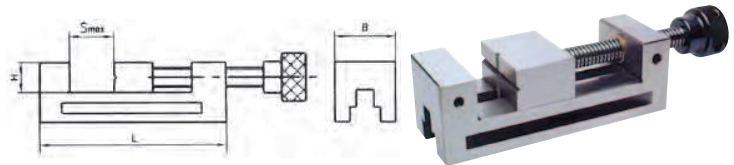


Tech. Code	C01 Euro	Total length L mm	Jaw opening mm	Jaw width mm	Jaw height mm	Weight kg
C6396025X025	84,00	65	25	25	10	0.3
C6396036X040	95,00	100	40	36	20	1
C6396050X065	105,00	140	65	50	25	2
C6396063X085	116,00	175	85	63	32	4.1
C6396100X125	273,00	245	125	100	45	10
C6396125X160	378,00	285	160	125	50	21
C6396150X200	588,00	330	200	150		20

LTec PRECISION VICE - C6397

Tempered and ground steel, screw clamping, V-jaws for a reliable grip. For workpiece machining of grinding, milling, measuring and electro discharge machines.

Parallelism error: ± 0.005 mm / 100 mm
Orthogonality error: ± 0.005 mm



Tech. Code	C01 Euro	Total length L mm	Jaw opening mm	Jaw width mm	Jaw height mm	Weight kg
C6397050X065	147,00	155	65	50	25	2.3
C6397063X085	168,00	190	85	63	32	4
C6397073X100	231,00	210	100	73	35	5.8
C6397088X125	263,00	250	125	88	40	9.5
C6397100X125	368,00			100	45	12

LTec PRECISION PARALLELS - C6398

Tempered and ground steel in pairs. Wooden packing case.

Pairs Height:

14 - 16 - 18 - 20 - 22 - 24 - 26 - 28 - 30 - 32 - 35 - 40 - 45 - 50 mm

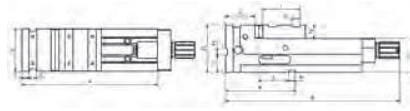
Tech. Code	C01 Euro	Length mm	Thickness mm	Pairs n°
C6398150X10	441,00	150	10	14



ARNOLD HIGH-PRESSURE MANUAL VICES - C6550

ITEM: MAT MECHANICAL

The high-pressure vices maintain a constant length regardless of the size of the workpiece and are particularly appropriate for use on machining centers.



Tech. Code	C02 Euro	Dim. mm	Max op. mm	Clamping kg	A mm	B (with regulator) mm	C - 0.02 mm	C - 0.02 mm	AND mm	E mm	F mm	G mm	H mm	J + 0.02 mm	J + 0.02 mm	K mm	L mm	MH7 mm
C6550125	2.395,00	125	4,000	4.000	410	524	551	100	140	126	21	24	88	112	90	210	50	20
C6550160	3.195,00	160	5,000	5.000	570	679	704	110	160	161			115		250	60		
C6550200	3.679,00	200						100	173	201			111					

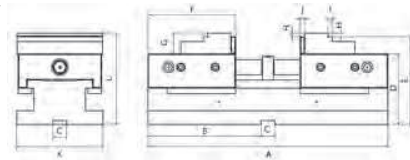
SET SUPPLIED WITH:

- base body
- mechanical worm
- 1 set of plain jaws
- 1 crank
- 4 flanges
- instruction manual

ARNOLD HIGH-PRESSURE MANUAL VICES FOR 5-AXES MACHING CENTER - SELF-CENTRING SC - C6700

ITEM: SELF-CENTERING SC

The ARNOLD SC vices are compact, tall, self-centring and highly precise vices that maintain their constant length, which makes them particularly suitable for work on machining centers with 5 controlled axes.

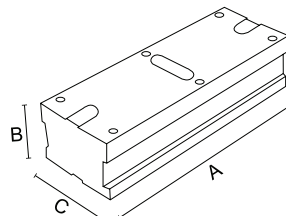


Tech. Code	C02 Euro	Dim. mm	Max op. mm	A mm	B mm	C mm	AND mm	E mm	F mm	G mm	H mm	I mm	J mm	K mm	Weight kg
C6700090	1.705,00	090	244	250	115	20H7	100	125	93	30	5	3	6	14.3	14,3
C6700125	2.095,00	125	342	350	165		103		128	20		5	7	125	30

SET SUPPLIED WITH:

- base body
- mechanical worm without high pressure
- 1 set of jaws
- 1 set of plain jaws
- 1 ratchet key
- 1 crank
- 4 flanges
- instruction manual

ARNOLD BASE FOR ARNOLD SC VICES - C6725



Tech. Code	C02 Euro	A mm	B mm	C mm
C6725090	599,00	250	90	91
C6725125	640,00	350		126