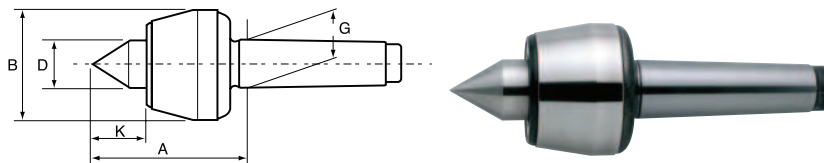


ROHM LIVE CENTRES - C6250

Hardened and ground steel, 60° insert.



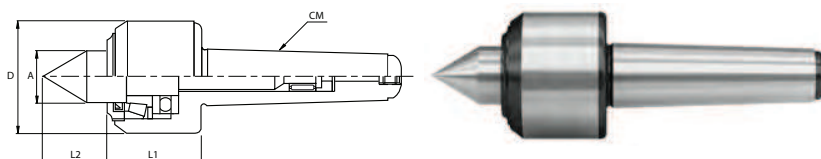
Tech. Code	C02 Euro	Mk	Concentricity error	A mm	B mm	D mm	G mm	K mm	Max. Piece kg	rpm
C62503	227,00	3	0.005	70.5	50	22	23.82	27.5	0.4	6.300
C62504	290,00	4		102.5	70	32	31.27	41	0.8	3.800
C62505	422,00	5		129	90	40	44.40	50.5	2.000	3.000

CLTec LIVE CENTRES - C6251

NEW

ITEM: C6251

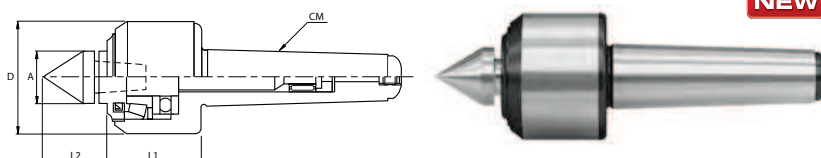
Shaped tailstock with precision bearings, recommended for lathes with medium-load machinings and not high speeds. Hardened and rectified body and shaft, permanently lubricated with special grease.



Tech. Code	C02 Euro	Mk	Concentricity error	L1 mm	D mm	A mm	L2 mm	Max weight kg	Turns/ min.
C6251CM3	186,00	3	0,005	43	55	22	27	1,0	5.000
C6251CM4	238,00	4		51	61	29	38	1,6	4.000
C6251CM5	304,00	5		55	80	38	45	3,8	3.000

ITEM: C6252

Shaped tailstock with **interchangeable tips** with precision bearings recommended for lathes with heavy-load machinings and not high speeds. Hardened and rectified body and shaft, permanently lubricated with special grease.



NEW

Tech. Code	C02 Euro	Mk	Concentricity error	L1 mm	D mm	A mm	L2 mm	Max weight kg	Turns/ min.
C6252CM3	239,00	3	0,01	43	55	22	27	1,0	5.000
C6252CM4	285,00	4		51	61	29	38	1,6	4.000
C6252CM5	346,00	5		55	80	38	45	3,8	3.000

CLTec REVOLVING TAILSTOCK IN WOODEN BOX WITH INTERCHANGEABLE INSERTS KIT - C6269

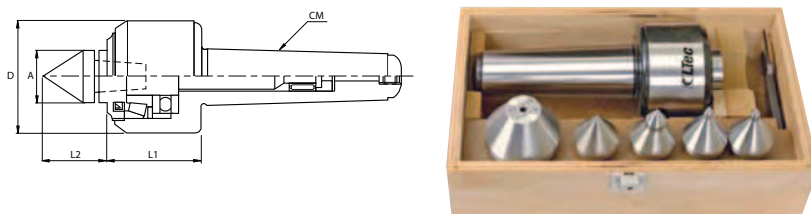
NEW

ITEM: C6269

Revolving tailstock with tips in wooden box kit.

Composition:

- Revolving tailstock centre Mod. C6252CM4
- Tips Mod: 1x C6255CM4 - 1x C6257CM4
2x C6259CM4 - 1x C6262CM4
- Tip extraction key



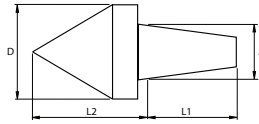
Tech. Code	C02 Euro	Mk	Concentricity error	L1 mm	D mm	A mm	L2 mm	Max weight kg	Turns/ min.
C6269CM4	539,85	4	0,01	51	61	29	40	1,6	4.000

LTec INSERTS FOR LIVE CENTRES - C6255

NEW

ITEM: C6255

Standard interchangeable tips for tailstock mod. C6252.
Hardened and rectified body.



Tech. Code	C02 Euro	For live centres	D mm	A mm	L1 mm	L2 mm
C6255CM3	32,45	MK3	25	13,458	25	30
C6255CM4	35,00	MK4	29	15,303	27	33
C6255CM5	38,35	MK5	35	20,625	28	38

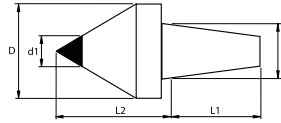
LTec INSERTS FOR LIVE CENTRES - C6256

NEW

ITEM: C6256

Standard interchangeable tips with carbide point for tailstock mod. C6252.

Hardened and rectified body.



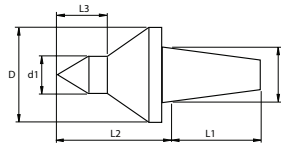
Tech. Code	C02 Euro	For live centres	D mm	d1 mm	A mm	L1 mm	L2 mm
C6256CM3	56,64	MK3	25	10	13,458	25	30
C6256CM4	58,41	MK4	29	12	15,303	27	33
C6256CM5	64,90	MK5	35	14	20,625	28	38

LTec INSERTS FOR LIVE CENTRES - C6257

NEW

ITEM: C6257

Slim interchangeable tips for tailstock mod. C6252.
Hardened and rectified body.



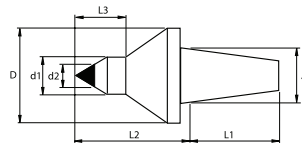
Tech. Code	C02 Euro	For live centres	D mm	d1 mm	A mm	L1 mm	L2 mm	L3 mm
C6257CM3	40,12	MK3	25	12	13,458	25	36	16
C6257CM4	42,00	MK4	29		15,303	27	39	
C6257CM5	45,43	MK5	35	15	20,625	28	44	19

LTec INSERTS FOR LIVE CENTRES - C6258

NEW

ITEM: C6258

Slim interchangeable tips with carbide point for tailstock mod. C6252.
Hardened and rectified body.



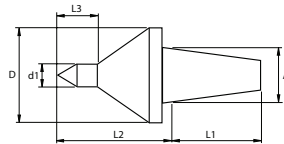
Tech. Code	C02 Euro	For live centres	D mm	d1 mm	d2 mm	A mm	L1 mm	L2 mm	L3 mm
C6258CM3	68,44	MK3	25	12	7	13,458	25	36	16
C6258CM4	71,98	MK4	29		8	15,303	27	39	
C6258CM5	77,88	MK5	35	15	12	20,625	28	44	19

CLTec INSERTS FOR LIVE CENTRES - C6259

NEW

ITEM: C6259

Standard interchangeable extra-small tips for tailstock mod. C6252.
Hardened and rectified body.



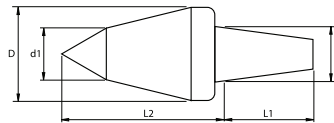
Tech. Code	C02 Euro	For live centres	D mm	d1 mm	A mm	L1 mm	L2 mm	L3 mm
C6259CM3	40,12	MK3	25	7	13,458	25	36	12
C6259CM4	42,00	MK4	29		15,303	27	39	
C6259CM5	45,43	MK5	35		20,625	28	44	

CLTec INSERTS FOR LIVE CENTRES - C6260

NEW

ITEM: C6260

Extended interchangeable tips for tailstock mod. C6252.
Hardened and rectified body.



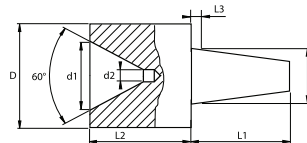
Tech. Code	C02 Euro	For live centres	D mm	d1 mm	A mm	L1 mm	L2 mm
C6260CM3	40,12	MK3	25	8	13,458	25	47
C6260CM4	41,89	MK4	29	10	15,303	27	52
C6260CM5	45,43	MK5	35	12	20,625	28	61

CLTec INSERTS FOR LIVE CENTRES - C6261

NEW

ITEM: C6261

Interchangeable tailstock truncated cone for tailstock mod. C6252.
Hardened and rectified body.



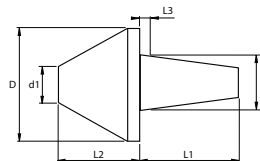
Tech. Code	C02 Euro	For live centres	D mm	d1 mm	A mm	L1 mm	L2 mm	L3 mm
C6261CM3	58,41	MK3	29	23	13,458	27	30	2
C6261CM4	58,41	MK4			15,303	29		
C6261CM5	58,41	MK5	35	27	20,625	30	35	

CLTec CUSPS FOR TAILSTOCK - C6262

NEW

ITEM: C6262

Interchangeable tips for tubular workpieces for tailstock mod. C6252.
Hardened and rectified body.



Tech. Code	C02 Euro	For live centres	D mm	d1 mm	A mm	L1 mm	L2 mm	L3 mm
C6262CM3	61,95	MK3	59	26	13,458	27	35	2
C6262CM4	62,00	MK4			15,303	29		
C6262CM5	61,95	MK5			20,625	30		