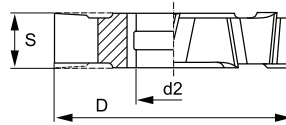


LTec SIDE AND FACE CUTTER - A5450

DIN 885 A HSSE

Material High speed steel Co
Standard DIN 885 A
Teeth Alternate
Profile Type N
Surface treatment Bright
Application For steel and cast iron slotting



Cutting data available at pages A.127,201

< 500	< 850	< 1200	< 600	< 850	DUPLEX	< 240	< 300	< 10% Si	> 10% Si	Brass Copper	Ti6Al4V	HTA	< 45	< 60	< 65
●	●	○	○			●	○						○		

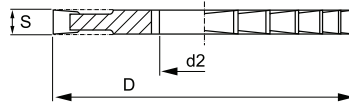
DIN 885 B

A5450	Tech. Code	A03 Euro	D mm	S mm	d2 mm	Z	A5450	Tech. Code	A03 Euro	D mm	S mm	d2 mm	Z		
	A5450504	91,50	50	4	16	16		A54501005	154,30	100	5	32	24		
	A5450505	91,50		5				A54501006	151,10		6				
	A5450506	97,50		6				A54501008	164,50		8				
	A5450634	93,10	4		A545010010	184,30	10								
	A5450635	97,70	63	5	22	18		A54501255	214,50	125	5	32	26		
	A5450636	97,70		6				A54501256	220,90		6				
	A5450804	120,40	80	4	27	20		A54501258	218,60		8				24
	A5450805	119,60		5				A545012510	240,10		10			22	
	A5450806	123,30		6				A545012512	251,50	12					
	A54501004	158,10	100	4	32	24									

LTec SLITTING CUTTER - A5455

NdF HSSE

Material High speed steel Co
Standard Factory standard
Teeth Alternate
Profile Type N
Surface treatment Bright
Application For steel and cast iron slotting



Cutting data available at pages A.127,201

< 500	< 850	< 1200	< 600	< 850	DUPLEX	< 240	< 300	< 10% Si	> 10% Si	Brass Copper	Ti6Al4V	HTA	< 45	< 60	< 65
●	●	○	○			●	○						○		

FACTORY STANDARD

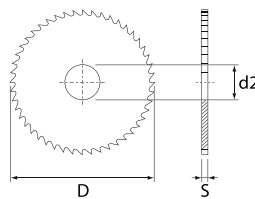
A5455	Tech. Code	A03 Euro	D mm	S mm	d2 mm	Z	A5455	Tech. Code	A03 Euro	D mm	S mm	d2 mm	Z
	A5455631,6	166,00	63	1.6	22	32		A54551002	264,10	100	2	27	44
	A5455632	166,00		2				A54551002,5	264,10		2.5		
	A5455632,5	166,00		2.5				A54551003	264,10		3		
	A5455633	166,00		3				A54551003,5	264,10		3.5		
	A5455633,5	166,00		3.5				A54551252	387,00	2			
	A5455802	219,20	80	2	27	36		A54551252,5	387,00	125	2.5	32	44
	A5455802,5	219,20		2.5				A54551253	387,00		3		
	A5455803	219,20		3				A54551253,5	387,00		3.5		
	A5455803,5	219,20		3.5				A54551254	387,00		4		

DIN 1837-A HSS

Slitting saws in both high speed and super high speed steels suitable for cutting-off, milling, and grooving steels and alloys on manual, semi-automatic and fully automatic machines.

The saw blade range is Ø 20mm - Ø 250mm with thicknesses ranging 0,3 mm - 6 mm in variable increments.

All standard saws are available in HP-GRIND execution but are readily available in VAPO or P.V.D. (Physical Vapour Deposition) coated execution.



A5460	Tech. Code	A03 Euro	D mm	S mm	d2 mm	Z	
	A54600200,8	14,40	20	0,8	5	48	
	A54600201	14,40		1		40	
	A54600202	18,30		2		32	
	A54600202,5	19,50		2,5			
	A54600250,5	14,80	25	0,5	8	64	
	A54600251	14,80		1		48	
	A54600251,6	18,00		1,6		40	
	A54600252	19,30		2		32	
	A54600253	24,00	32	3	8	32	
	A54600255	33,20		5			
	A54600320,6	15,50		0,6		64	64
	A54600320,8	15,50		0,8			
	A54600321	15,50	1				
	A54600321,2	17,90	1,2	48			
	A54600322	20,40	40	2	10	48	
	A54600400,3	19,30		0,3		10	
	A54600400,4	19,30		0,4		80	10
	A54600400,5	17,40		0,5			
	A54600400,7	17,40	0,7				
	A54600400,8	17,40	0,8				
	A54600401	17,40	40	1	10	64	
	A54600401,2	19,60		1,2			
	A54600401,5	19,60		1,5			
	A54600402	21,10		2		48	
	A54600402,5	23,70	50	2,5	13	48	
	A54600500,3	21,10		0,3		128	
	A54600500,4	21,10		0,4		100	128
	A54600500,5	19,10		0,5			
	A54600500,6	19,10	0,6				
	A54600500,7	20,80	0,7				
	A54600500,8	19,10	50	0,8	13	80	
	A54600501	19,10		1			
	A54600501,6	25,10		1,6		64	
	A54600502	25,10		2			
	A54600502,5	25,60	63	2,5	16	64	
	A54600503	29,90		3		48	
	A54600630,3	23,90		0,3		128	128
	A54600630,4	23,90		0,4			
	A54600630,5	23,90	0,5				
	A54600630,6	21,80	0,6	100			
	A54600630,8	21,80	63	0,8	16	100	
	A54600631	21,80		1			
	A54600631,2	25,20		1,2		80	100
	A54600631,5	25,20		1,5			
	A54600631,6	25,20	1,6				
	A54600632	27,20	2	80			
	A54600633	31,60	63	3	16	64	

A5460	Tech. Code	A03 Euro	D mm	S mm	d2 mm	Z	
	A54600800,3	27,50	80	0,3	22	160	
	A54600800,4	35,70		0,4		128	
	A54600800,5	25,50		0,5		100	128
	A54600800,6	25,50		0,6			
	A54600800,8	25,50	0,8				
	A54600801	25,60	1				
	A54600801,2	25,50	80	1,2	22	100	
	A54600801,5	28,30		1,5			
	A54600801,6	28,30		1,6			
	A54600802	30,70		2		80	
	A54600802,5	37,00	100	2,5	22	80	
	A54600803	39,90		3			
	A54600804	49,00		4		64	
	A54600805	60,70		5		60	
	A54600806	66,70	100	6	22	60	
	A54601000,5	30,40		0,5		160	
	A54601000,8	30,40		0,8		128	160
	A54601001	30,40		1			
	A54601001,2	30,40	1,2				
	A54601001,5	36,70	1,5	100			
	A54601001,6	36,70	100	1,6	22	100	
	A54601002	41,00		2			
	A54601002,5	46,20		2,5			
	A54601003	49,50		3		80	
	A54601004	66,60	125	4	22	80	
	A54601005	74,90		5			
	A54601250,8	44,20		0,8		160	
	A54601251	44,30		1		128	160
	A54601251,2	44,60	1,2				
	A54601251,5	46,80	1,5				
	A54601251,6	46,80	1,6	128			
	A54601252	49,50	125	2	22	128	
	A54601252,5	52,40		2,5			
	A54601253	58,20		3		100	
	A54601254	86,70		4			
	A54601601,2	67,10	160	1,2	32	160	
	A54601601,6	68,20		1,6			
	A54601602	69,90		2		128	
	A54601602,5	75,20		2,5			
	A54601603	85,70	160	3	32	128	
	A54601604	119,20		4			
	A54601605	140,50		5		100	
	A54602001	91,40		1		200	100
	A54602001,2	91,80	1,2	200			
	A54602002	101,90	2				
	A54602002,5	111,00	2,5	160			
	A54602504	244,10	250	4			

LTec CIRCULAR SAW BLADES DIN 1838-B - A5465

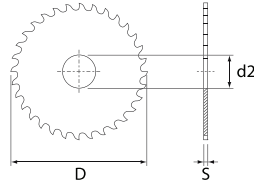
NEW

DIN 1838-B HSS

Slitting saws in both high speed and super high speed steels suitable for cutting-off, milling, and grooving steels and alloys on manual, semi-automatic and fully automatic machines.

The saw blade range is Ø 50mm - Ø 250mm with thicknesses ranging 0,5 mm - 6 mm in variable increments.

All standard saws are available in HP-GRIND execution but are readily available in VAPO or P.V.D. (Physical Vapour Deposition) coated execution.

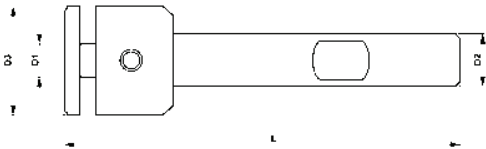


A5465	Tech. Code	A03 Euro	D mm	S mm	d2 mm	Z
	A54650500,6	19,10	50	0,6	13	48
	A54650500,8	19,10		0,8		40
	A54650501	19,10		1		
	A54650501,2	22,10		1,2		32
	A54650501,6	22,10		1,6		
	A54650502	23,90		2		
	A54650502,5	25,60	2,5	63	64	
	A54650630,5	21,80	0,5		48	
	A54650630,8	21,80	0,8			
	A54650631	21,80	1		40	
	A54650631,2	25,20	1,2			
	A54650631,5	25,20	1,5			
	A54650631,6	25,20	1,6			
	A54650632	27,20	2		32	
	A54650633	31,60	3			
	A54650634	39,90	4		24	
	A54650635	49,90	5			
	A54650800,8	26,70	0,8		80	64
	A54650801	26,70	1			48
	A54650801,2	26,70	1,2			

A5465	Tech. Code	A03 Euro	D mm	S mm	d2 mm	Z
	A54650801,6	28,30	80	1,6	22	48
	A54650802	30,70		2		40
	A54650803	30,70		3		
	A54650804	49,00		4		32
	A54650805	60,70		5		
	A54651000,8	29,60	0,8	100	64	
	A54651001	29,60	1		48	
	A54651001,5	36,70	1,5			
	A54651001,6	36,70	1,6		40	
	A54651002	41,00	2			
	A54651003	49,50	3		80	
	A54651004	66,60	4			
	A54651250,8	44,20	0,8		125	64
	A54651251	44,30	1			48
	A54651252	49,50	2			
	A54651252,5	52,40	2,5	40		
	A54651253	58,20	3			
	A54651254	86,70	4		80	
	A54651255	101,80	5	40		

LTec DISK SAW HOLDERS DIN 1837-A AND DIN 1838-B - C3230

NEW



Tech. Code	C01 Euro	D1 mm	D2 mm	D3 mm	L mm
C323005	114,00	5	8	16	60
C323008	107,00	8	6	15	
C323010	107,00	10	8	19	62
C323013	107,00	13	10	24	69
C323016	107,00	16	13	31	78
C323022	114,00	22	16	40	86
C323032	253,00	32	25	88	124