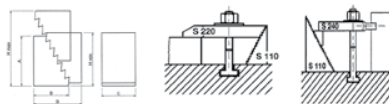


LTec TOOTHED SUPPORTS - C7200

Hardened painted steel.



Tech. Code	C01 Euro	A mm	B mm	C mm	D mm	H min. mm	H max. mm
C720031,5	5,10	31.5	22	30	38	31.5	53
C720064,5	8,67	64.5	36.5		70	64.5	105
C7200128	14,28	128	68		132	128	208

LTec TOOTHED SUPPORT SET - C7210

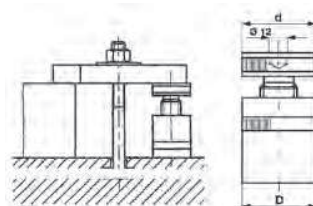
Supplied in wooden box.

Tech. Code	C01 Euro	Model	Weight kg
C7210SET24	232,05	8 pcs. N720031,5 8 pcs. N720064,5 4 pcs. N7200128	8.5



LTec SCREW SUPPORTS - C7250

Hardened painted steel.



Tech. Code	C01 Euro	h min. mm	h max. mm	d mm	D mm	F max. kN
C725050	14,79	38	50	34	34	20
C725070	22,44	50	70	50	50	60
C7250100	25,50	70	100			
C7250140	44,37	100	140	65	70	105
C7250210	75,48	140	210	70	80	180
C7250300	126,99	190	300	80	100	360

LTec SCREW SUPPORTS WITH MAGNETIC BASE - C7260

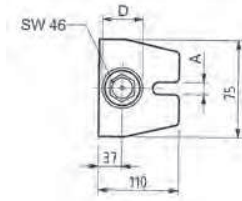
The magnetic base allows this item to be used as an adjustable vertical or horizontal support. Base material: "ERGAL" aluminium alloy.



Tech. Code	C01 Euro	h min. mm	h max. mm	d mm	D mm	F max. kN
C72605764	44,37	57	64	50	50	30
C72607584	46,41	75	84			
C726085112	56,61	85	112			

LTec SCREW SUPPORTS - "ATLAS" TYPE - C7270

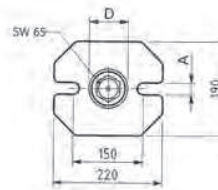
Hardened painted steel. Trapezoidal thread 30 x 6.



Tech. Code	C01 Euro	h min. mm	h max. mm	A mm	D mm	F max. kN
C7270140	55,59	100	140	18	50	60
C7270200	71,91	140	200			40
C7270320	99,45	200	320	22		25
C7270550	138,21	320	550			

LTec SCREW SUPPORTS HEAVY TYPE - C7280

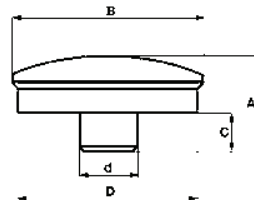
Hardened painted steel. Trapezoidal thread 40 x 6.



Tech. Code	C01 Euro	h min. mm	h max. mm	A mm	D mm	F max. kN
C7280300	215,22	200	300	26	70	80
C7280460	265,20	280	460			60
C7280750	330,99	430	750			50

LTec CONVEX CAPS - C7300

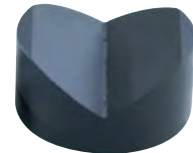
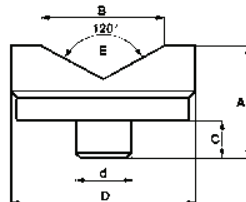
Hardened blackened steel.
Used on items S120-S121-S122-S130-S131.



Tech. Code	C01 Euro	A mm	B mm	C mm	D mm	d mm
C730035	11,22	18	37	8	35	12

LTec "V" GROOVE CAPS - C7310

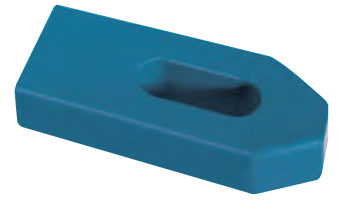
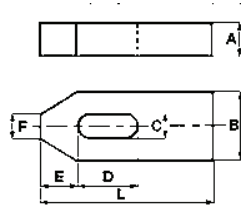
Hardened blackened steel.
Used on items S120-S121-S122-S130-S131.



Tech. Code	C01 Euro	A mm	B mm	C mm	D mm	d mm
C731045	17,85	23	32	8	45	12
C731065	24,48	38	56		65	

CLtec STANDARD CLAMPS - C7400

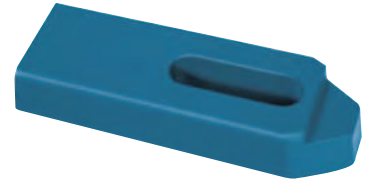
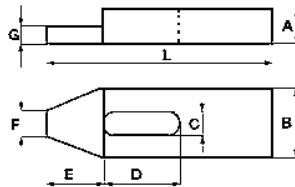
Hardened painted steel. R > 700 N/mm².



Tech. Code	C01 Euro	A mm	B mm	C mm	D mm	E mm	F mm	L mm	For screw M
C740007050	6,12	10	20	7	20	10	8	50	6
C740011080	7,14	15	30	11	30	15	12	80	10
C740014100	8,67	20	40	14	40	21	14	100	12 - 14
C740014125	9,69				50			125	
C740014160	11,22				65			160	
C740018125	11,73	25	50	18	45	26	18	125	16 - 18
C740018160	14,28				65			160	
C740022160	17,85	30	60	22	60	30	22	160	20 - 22
C740022200	22,44				80			200	
C740026250	32,13				70			26	

CLtec SHAPED STANDARD CLAMPS - C7415

Hardened painted steel. R > 700 N/mm².



Tech. Code	C01 Euro	A mm	B mm	C mm	D mm	E mm	F mm	G mm	L mm	For screw M
C741509060	8,16	12	25	9	22	13	10	7	60	8
C741511080	9,18	15	30	11	30	15	12	9	80	10
C741514100	11,22	20	40	14	40	21	14	12	100	12 - 14
C741514125	12,24				50				125	
C741514160	13,26				65				160	
C741518125	14,79	25	50	18	45	26	18	15	125	16 - 18
C741518160	15,81				65				160	
C741518200	18,87	30	60	22	80	30	22	20	200	20 - 22
C741522160	21,42				60				160	
C741522200	23,46				80				200	
C741526250	31,11	70	26	105	35	26	20	250	24	

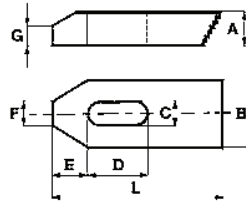
METROLOGY

Discover the products

CHAPTER D

CLtec TOOTHED CLAMPS - C7424

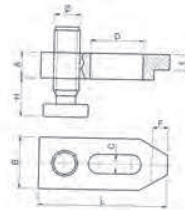
Hardened painted steel. R > 700 N/mm².



Tech. Code	C01 Euro	A mm	B mm	C mm	D mm	E mm	F mm	G mm	L mm	For screw M
C742407050	9,18	10	20	7	20	10	8	6	50	6
C742409060	9,18	12	25	9	22	13	10	8	60	8
C742414100	13,26	20	40	14	40	21	14	12	100	12 - 14
C742418125	16,83	25	50	18	45	26	18	15	125	16 - 18
C742422160	23,46	30	60	22	60	30	22	18	160	20 - 22
C742426200	33,15		70	26	80	35	26		200	24

CLtec ADJUSTABLE CLAMPS WITH SQUARE THREAD SCREW - C7430

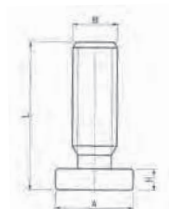
Hardened painted steel. R > 700 N/mm².



Tech. Code	C01 Euro	A mm	B mm	C mm	D mm	E mm	F mm	L mm	H mm	Ø mm	For screw M
C743015100	17,85	20	40	15	40	12	12	100	15 - 50	20 x 4	12 - 14
C743015125	18,87				45			125			
C743015160	19,89				60			160			
C743019125	21,42	25	50	19	45	15	15	125	15 - 70	30 x 6	16 - 18
C743019160	26,52				60			160			
C743019200	29,07				80			200			
C743023160	31,11	30	60	23	60	20	20	160	15 - 70	30 x 6	20 - 22
C743023200	34,68				80			200			
C743027200	41,31	40	70	27	100	25	23	250	15 - 70	30 x 6	24
C743027250	45,39							300			
C743027300	52,02							300			

CLtec SPARE SCREWS FOR ADJUSTABLE CLAMPS - C7440

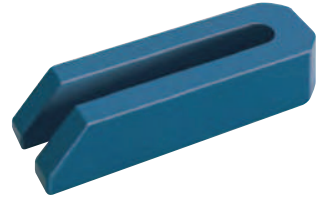
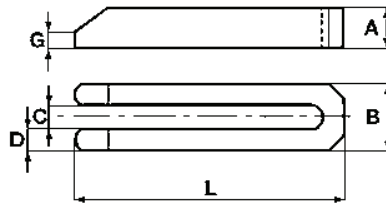
Spare screws for adjustable clamps.



Tech. Code	C01 Euro	A mm	B mm	H mm	L mm
C744020070	8,16	35	20 x 4	10	70
C744030100	11,22	45	30 x 6	15	100
C744030125	16,83	70			125

CLTec FORKED CLAMPS WITH BEVEL - C7460

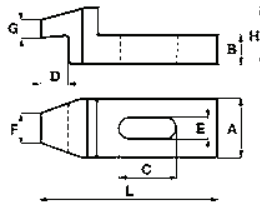
Hardened painted steel. $R > 600 \text{ N/mm}^2$. This item is produced by milling a steel block.



Tech. Code	C01 Euro	A mm	B mm	C mm	D mm	G mm	L mm	For screw M
C746011100	10,20	20	30	11	5	5	100	10
C746014160	15,81	25	40	14	6	6	160	12-14
C746014200	17,85						200	
C746018160	18,87	30	50	18	8	8	160	16-18
C746018200	22,44						200	
C746018250	31,11	40	60	22	10	10	250	20-22
C746022200	29,07						200	
C746022250	36,72						250	
C746022315	42,33						315	
C746026200	35,70	70	26	26	26	26	200	24
C746026250	39,78						250	
C746026315	47,94						315	
C746040600	187,68	60	100	40	12	12	600	36

CLTec CRANKED CLAMPS - C7470

Hardened painted steel. $R > 700 \text{ N/mm}^2$. This item is produced by milling a steel block.



Tech. Code	C01 Euro	A mm	B mm	C mm	D mm	E mm	F mm	G mm	H mm	L mm	For screw M
C747014125	24,48	40	20	30	20	14	20	23	40	125	12-14
C747018160	32,13	50	25	40	25	18	25	28	50	160	16-18
C747022200	44,37	60	30	60	30	22	30	35	60	200	20-22
C747026200	54,06			50						24	
C747026250	63,24	70	35	75	35	26	35	38	70	250	24

HAND TOOLS MRO

Discover the products

CHAPTER

F

CLTec CLAMP SET T-SLOT 16MM - C7490

Set supplied in wooden case.

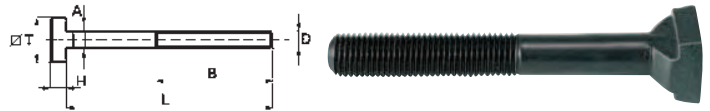
Tech. Code	C7490SET16	
C01	Euro	375,36
Toothed support		C720031,5 - 2 pz.
Toothed support		C720064,5 - 4 pz.
Toothed support		C7200128 - 2 pz.
Standard clamps		C740018125 - 4 pz.
Toothed clamps		C742418125 - 4 pz.
Complete hammered bolts		C751016X100 - 4 pz.
Complete hammered bolts		C751016X150 - 2 pz.
Complete stud		C752014X100 - 2 pz.
Complete stud		C752014X160 - 2 pz.
Extension nuts		C754014 - 4 pz.
Tall nuts		C753516 - 6 pz.
Nuts for slot		C75501416 - 4 pz.
Washers		C757017 - 6 pz.



Note: the number after the dash indicates the number of pieces.

CLTec HAMMERHEAD BOLTS - C7510

Din 787 - UNI 42CrMo4. In accordance with ASTM A193-B7, class 10.9.

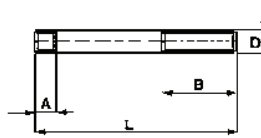


Tech. Code	C01 Euro	D mm	L mm	B mm	A mm	C mm	H mm	Slotting mm
C751010X40	3,30	M10	40	30	9.7	15	6	10
C751010X63	3,40		63	45				
C751010X80	3,50		80	55				
C751010X100	3,60		100	60				
C751012X50	3,50	M12	50	35	11.7	18	7	12
C751012X63	3,60		63	45				
C751012X80	3,70		80	55				
C751012X100	3,80		100	60				
C751012X125	3,90		125	75				
C751012X150	4,00		150	100				
C751012X170	4,18		170	100				
C751012X200	4,28	200	120					
C751014X63	3,70	M14	63	40	13.7	22	8	14
C751014X80	3,80		80	55				
C751014X100	3,90		100	65				
C751014X125	4,00		125	75				
C751014X150	4,18	150	100					
C751016X63	4,00	M16	63	45	15.7	25	9	16
C751016X80	4,18		80	55				
C751016X100	4,59		100	63				
C751016X125	4,79		125	75				
C751016X150	5,00		150	100				
C751016X160	5,10		160	100				

Tech. Code	C01 Euro	D mm	L mm	B mm	A mm	C mm	H mm	Slotting mm
C751016X170	5,20	M16	170	100	15.7	25	9	16
C751016X200	5,51		200	125				
C751018X80	4,28		80	55				
C751018X100	4,49	M18	100	65	17.7	28	10	18
C751018X125	4,79		125	85				
C751018X150	5,20		150	100				
C751018X170	5,61		170	100				
C751018X200	6,12		200	125				
C751018X230	6,63		230	150				
C751020X80	5,92	M20	80	55	19.7	32	12	20
C751020X100	6,22		100	63				
C751020X125	6,63		125	85				
C751020X150	7,04		150	100				
C751020X160	7,24		160	100				
C751020X170	7,75		170	100				
C751020X200	8,87	200	125					
C751020X230	10,00	230	150					
C751020X315	11,12	315	190					
C751024X160	11,63	M24	160	100	23.7	40	16	24
C751024X170	13,26		170	100				
C751024X200	14,99		200	125				
C751024X230	15,50		230	150				
C751024X250	17,14		250	150				

CLtec SINGLE STUDS - C7520

Din 6379 - UNI 42CrMo4. In accordance with ASTM A193-B7, class 10.9.

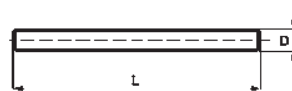


Tech. Code	C01 Euro	D mm	L mm	A mm	B mm
C75208X40	1,30	M8	40	11	20
C75208X63	1,30		63		40
C75208X80	1,40		80		50
C75208X100	1,40		100		63
C752010X50	1,40	M10	50	13	25
C752010X63	1,40		63		35
C752010X80	1,40		80		50
C752010X100	1,50		100		75
C752010X120	1,60	M10	120	13	75
C752010X160	1,80		160		100
C752012X50	1,40		50		25
C752012X63	1,40		63		32
C752012X80	1,60	M12	80	15	50
C752012X100	1,60		100		63
C752012X125	1,70		125		75
C752012X160	2,00		160		100
C752012X200	2,10	M12	200	15	125
C752012X225	2,30		225		160
C752012X250	2,40		250		160
C752014X63	1,60		M14		63
C752014X160	2,10	160		100	
C752014X200	2,50	200		125	
C752014X225	2,60	225		160	
C752016X63	1,70	M16	63	19	35
C752016X80	1,80		80		50
C752016X100	1,90		100		63
C752016X125	2,10		125		75
C752016X160	2,60	M16	160	19	100
C752016X200	3,00		200		125
C752016X225	3,20		225		160
C752016X250	3,40		250		160

Tech. Code	C01 Euro	D mm	L mm	A mm	B mm		
C752016X315	4,00	M16	315	19	180		
C752018X100	2,20	M18	100	23	50		
C752018X125	2,40		125		75		
C752018X160	2,90		160		100		
C752018X200	3,40		200		125		
C752018X225	3,60	M18	225	23	150		
C752018X250	3,90		250		180		
C752018X315	4,49		315		180		
C752020X80	2,30		80		32		
C752020X100	2,50	M20	100	27	50		
C752020X125	2,70		125		70		
C752020X160	3,40		160		100		
C752020X200	3,90		200		125		
C752020X225	4,28	M20	225	27	160		
C752020X250	4,49		250		200		
C752020X315	5,30		315		200		
C752022X100	2,90		100		45		
C752022X160	4,10	M22	160	31	100		
C752022X200	4,49		200		125		
C752022X250	5,61		250		160		
C752022X315	6,12		315		250		
C752024X160	4,28	M24	160	35	100		
C752024X200	4,90		200		125		
C752024X225	5,61		225		160		
C752024X250	6,02		250		180		
C752024X315	9,59	M24	315	35	180		
C752027X200	7,75		200		125		
C752027X225	8,87		M27		225	39	160
C752027X250	10,00				250		160
C752030X150	6,94	M30	150	43	80		
C752030X200	8,16		200		125		

CLtec THREADED BARS - C7525

UNI 42CrMo4. In accordance with ASTM A193-B7, class 10.9.



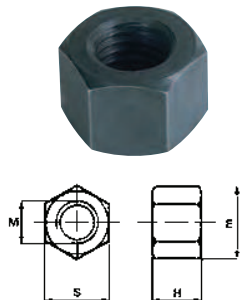
Tech. Code	C01 Euro	D mm	L mm
C75256	4,39	M6	1000
C75258	5,00	M8	
C752510	7,34	M10	
C752512	8,57	M12	
C752514	12,14	M14	
C752516	15,50	M16	

Tech. Code	C01 Euro	D mm	L mm
C752518	17,75	M18	1000
C752520	22,13	M20	
C752522	27,64	M22	
C752524	35,39	M24	
C752527	47,53	M27	
C752530	59,67	M30	

CLtec TURNED SHORT NUTS - C7530

Steel class 10K

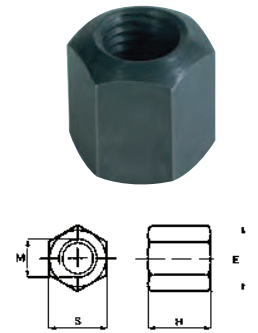
Tech. Code	C01 Euro	M mm	S mm	E mm	H mm
C753010	0,53	10	17	19.6	10
C753012	0,63	12	19	21.5	12
C753014	0,84	14	22	25	14
C753016	1,20	16	24	27.5	16
C753018	1,60	18	27	31	18
C753020	1,90	20	30	34.6	20
C753022	2,30	22	32	36.9	22
C753024	2,70	24	36	41.6	24
C753027	6,12	27	41	47.3	27
C753030	6,63	30	46	53.1	30



LTec TURNED TALL NUTS - C7535

Steel class 10K

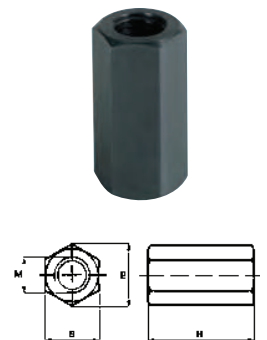
Tech. Code	C01 Euro	M mm	S mm	E mm	H mm
C75356	0,53	6	10	11.5	9
C75358	0,63	8	13	14.8	12
C753510	0,84	10	17	19.6	15
C753512	0,95	12	19	21.5	18
C753514	1,30	14	22	25	21
C753516	1,60	16	24	27.5	24
C753518	2,30	18	27	31	27
C753520	2,50	20	30	34.6	30
C753522	3,30	22	32	36.9	33
C753524	3,80	24	36	41.6	36
C753527	7,24	27	41	47.3	40
C753530	8,87	30	46	53.1	45



LTec EXTENSION NUTS - C7540

Steel class 10K

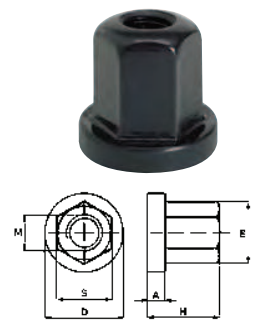
Tech. Code	C01 Euro	M mm	S mm	E mm	H mm
C75406	1,20	6	10	11.5	18
C75408	1,30	8	13	14.8	24
C754010	1,47	10	17	19.6	30
C754012	1,70	12	19	21.5	36
C754014	2,20	14	22	25	42
C754016	2,80	16	24	27.5	48
C754018	3,40	18	27	31	54
C754020	4,10	20	30	34.6	60
C754022	4,79	22	32	36.9	66



LTec NUTS WITH WASHER - C7545

Steel class 10K

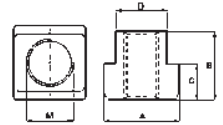
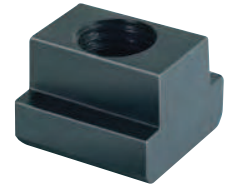
Tech. Code	C01 Euro	M mm	S mm	E mm	H mm	A mm	D mm
C75458	1,90	8	13	14.8	12	3.5	18
C754510	2,30	10	17	19.6	15	4	22
C754512	2,50	12	19	21.5	18		25
C754514	3,00	14	22	25	21	4.5	28
C754516	3,40	16	24	27.5	24	5	31
C754518	4,69	18	27	31	27		34
C754520	5,41	20	30	34.6	30		37
C754522	7,45	22	32	36.9	33	6	40
C754524	8,67	24	36	41.6	36		45
C754527	18,77	27	41	47.3	40	8	51
C754530	23,26	30	46	53.1	45		58



CLtec NUTS FOR T-SLOTS - C7550

Steel class 8.8

Tech. Code	C01 Euro	M mm	D mm	A mm	B mm	C mm	Slotting mm	
C75500608	1,40	6	7.7	13	10	6	8	
C75500810	1,50	8	9.7	15	12		10	
C75500812	1,60		11.7	18	14	7	12	
C75501012	1,60	10	13.7	22	16	8	14	
C75500814	1,90	8		15.7	25	18	9	16
C75501014	1,90	10						
C75501214	1,90	12						
C75500816	2,40	8	17.7					
C75501016	2,40	10						
C75501216	2,40	12						
C75501416	2,40	14						
C75500818	2,90	8	19.7	32	24	12	20	
C75501018	2,90	10						
C75501218	2,90	12						
C75501418	2,90	14						
C75501618	2,90	16	21.7	35	28	14	22	
C75501820	4,00	18						
C75501622	4,49	16						
C75501822	4,49	18						
C75502022	4,49	20	23.7	40	32	16	24	
C75501624	7,75	16						
C75502024	7,75	20						
C75502224	7,75	22						
C75501628	10,00	16	27.7	44	36	18	28	
C75502028	10,00	20						
C75502228	10,00	22						
C75502428	10,00	24						
C75502430	25,40	24	29.7	48	38	19	30	
C75502732	29,89	27	31.6	50	40	20	32	
C75503036	17,75	30	35.6	54	44	22	36	
C75503642	46,41	36	41.6	65	52	26	42	



CLtec EXTENDED NUTS FOR T-SLOTS - C7555

Steel class 8.8

Tech. Code	C01 Euro	M mm	D mm	L mm	A mm	B mm	C mm	Slotting mm
C75550608	2,30	6	7.7	26	13	10	5	8
C75550810	2,30	8	9.7	30	15	12	6	10
C75551012	2,50	10	11.7	36	18	14	7	12
C75551214	3,70	12	13.7	44	22	16	8	14
C75551618	5,00	16	17.7	56	28	20	10	18
C75551820	6,94	18	19.7	64	32	24	12	20



CLtec BLANK T-NUTS - C7560

Steel class 8.8

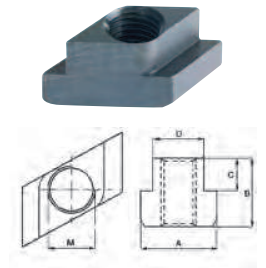
Tech. Code	C01 Euro	D mm	A mm	B mm	C mm	Slotting mm
C75608	1,10	7.7	13	10	6	8
C756010	1,10	9.7	15	12		10
C756012	1,20	11.7	18	14	7	12
C756014	1,40	13.7	22	16	8	14
C756016	1,80	15.7	25	18	9	16
C756018	2,10	17.7	28	20	10	18
C756020	2,90	19.7	32	24	12	20
C756022	3,70	21.7	35	28	14	22



CLTec NUTS FOR "RHOMBUS" T-SLOTS - C7565

Steel class 8.8

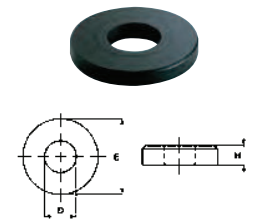
Tech. Code	C01 Euro	M mm	D mm	A mm	B mm	C mm	Slotting mm
C75651014	5,00	10	13.7	22	16	8	14
C75651018	6,63		17.7	28	20	10	18
C75651416	5,61		14	15.7	25	18	9
C75651618	6,22	16	17.7	28	20	10	18
C75651820	8,87	18	19.7	32	24	12	20
C75652022	10,00	20	21.7	35	28	14	22
C75651628	13,26	16	27.7	44	36	18	28



CLTec FLAT WASHERS - C7570

Steel class 8.8

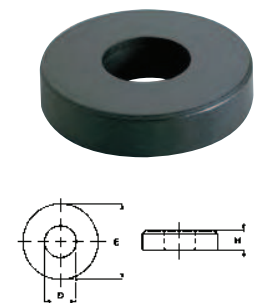
Tech. Code	C01 Euro	Screw Ø	D mm	E mm	H mm
C75706,6	0,42	6.6	6.6	13	3.5
C75708,4	0,53	8.4	8.4	18	4
C757010,5	0,63	10	10.5	22	
C757013	0,63	12	13	28	5
C757015	0,84	14	15	35	
C757017	0,95	16	17		
C757019	1,10	18	19	40	6
C757021	1,10	20	21		
C757023	1,20	22	23	45	8
C757025	1,30	24	25		
C757028	2,70	27	28		
C757031	3,80	30	31		



CLTec THICK WASHERS - C7575

Steel class 8.8

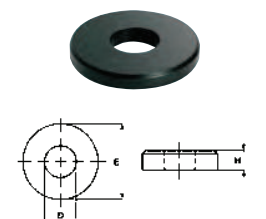
Tech. Code	C01 Euro	Screw Ø	D mm	E mm	H mm
C75758,4	1,40	8.4	8.4	35	8
C757510,5	1,70	10.5	10.5		
C757513	1,70	12	13	40	10
C757515	1,80	14	15		
C757517	2,10	16	17	45	
C757519	2,50	18	19		
C757521	3,20	20	21	50	12
C757523	3,40	22	23		
C757525	3,50	24	25		
C757528	6,12	27	28		



CLTec BROAD WASHERS - C7580

Steel class 8.8

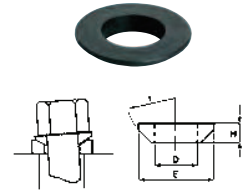
Tech. Code	C01 Euro	Screw Ø	D mm	E mm	H mm
C75806,6	0,53	6.6	6.6	17	17
C75808,4	0,95	8.4	8.4	23	4
C758010,5	1,10	10.5	10.5	28	
C758013	1,10	12	13	35	5
C758015	1,20	14	15	40	
C758017	1,40	16	17		
C758019	1,70	18	19	45	6
C758021	2,00	20	21		
C758023	2,10	22	23	50	8
C758025	2,70	24	25		



CLtec SPHERICAL SEAT WASHERS - C7585

Din 6319 C - Steel class 8.8

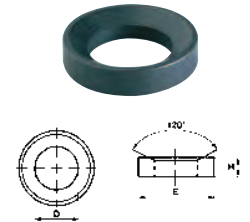
Tech. Code	C01 Euro	Screw Ø	D mm	E mm	r mm	H mm
C75856,4	0,63	6.4	6,4	12	2.3	2,3
C75858,4	0,74	8.4	8,4	17	3.2	3,2
C758510,5	0,84	10.5	10,5	21	15	4
C758513	0,84	12	13	24	4.6	4,6
C758515	1,20	14	15	28	22	5
C758517	1,20	16	17	30	5.3	5,3
C758521	1,40	20	21	36	6.3	6,3
C758525	2,00	24	25	44	8.2	8,2



CLtec DISHED WASHERS - C7590

Din 6319 D - Steel class 8.8

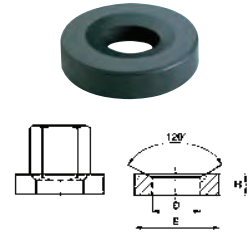
Tech. Code	C01 Euro	Screw Ø	D mm	E mm	H mm
C75907,1	0,63	7.1	7,1	2.8	2,8
C75909,6	0,74	9.6	9,6	3.5	3,5
C759012	0,84	10	12	4.2	4,2
C759014,2	0,84	14.2	14,2	24	5
C759016,5	1,20	16.5	16,5	5.6	5,6
C759019	1,20	16	19	6.2	6,2
C759023,2	1,40	23.2	23,2	7.5	7,5



CLtec DISHED WASHERS - C7595

Din 6319 G - Steel class 8.8

Tech. Code	C01 Euro	Screw Ø	D mm	E mm	H mm
C75957,1	0,84	7.1	7,1	17	4
C75959,6	0,95	9.6	9,6	23	
C759512	1,10	10	12	28	5
C759514,2	1,10	14.2	14,2	35	
C759516,5	1,20	16.5	16,5	40	6
C759519	1,40	16	19	45	
C759523,2	3,00	23.2	23,2	50	8

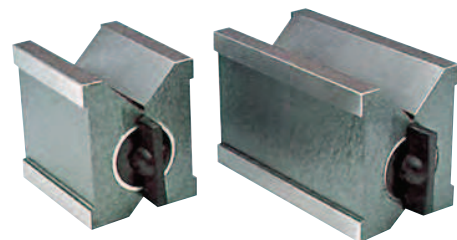


IDF MAGNETIC "V" PRISMS

ITEM: D4530

Fit for a quick positioning during machining and testing operations.
Single supplied.

Tech. Code	C02 Euro	mm	Lodging diameters mm
C760080095	155,00	70 x 80 x 95	5 - 70
C7600130085	290,00	70 x 130 x 85	



WRK PERMANENT MAGNETIC SQUARES

ITEM: D5110

Suitable for a fast 90° workpiece positioning, ideal for welding and marking operations.

Tech. Code	C02 Euro	mm	Magnetic force kg
C7602150	68,00	150 x 150 x 60	100
C7602200	102,00	200 x 200 x 60	140
C7602300	136,00	300 x 300 x 60	200

