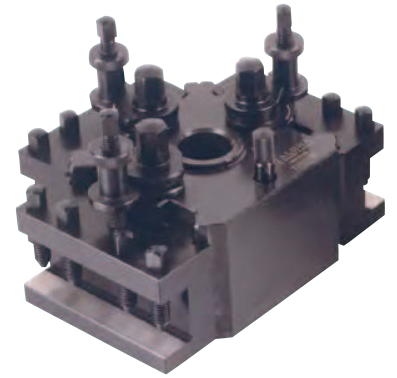
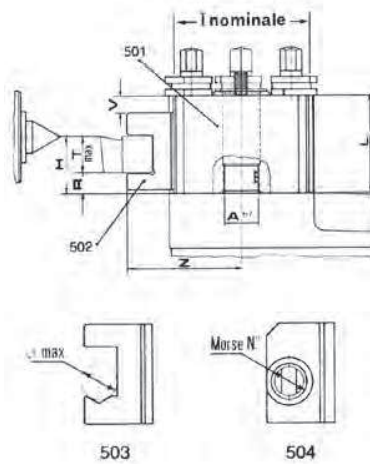


QUICK CHANGE STATIC TOOL HOLDER TURRET - C5210

Quick change static tool holder turret

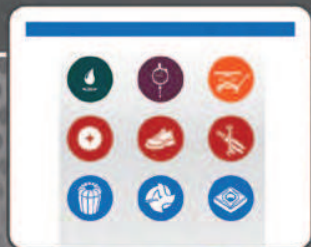
Standard equipment 5 tool holders:

- 3 flat seats
- 1 prismatic seat
- 1 conic seat



Tech. Code	C01 Euro	I mm	H7A mm	Min H mm	Max H mm	L mm	R mm	Max T mm	Z mm	Max Ø mm	Clamp n°
C5210100B	677,00	100	30	47	61	85	15	32	100	24	3
C5210115,3C	861,00	115.3	38	51	72	94	19		108	26	4

Link®



CHOOSE AND CLICK

LinkS@les

Linksales offers you the possibility to order all the products of our catalogue with just a click.

Subscribe now on our website, the registration is free.

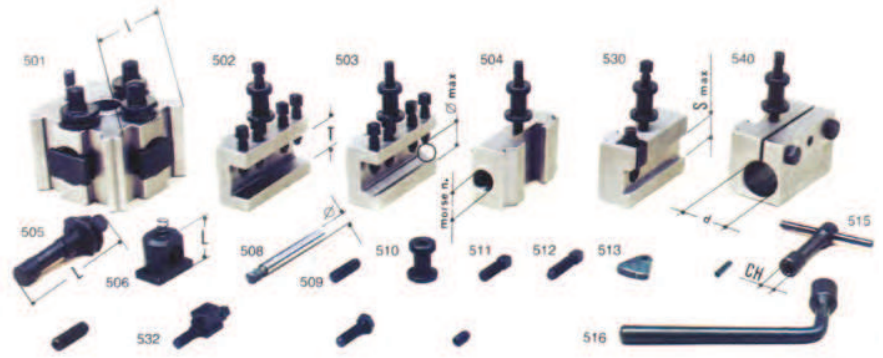
www.linkspa.it



Log in
to our website

More info on www.linkspa.it or write an email to info@linkspa.it

STATIC TOOL HOLDER TURRET COMPONENTS - C5220

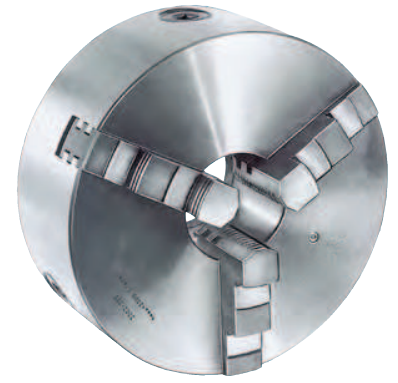
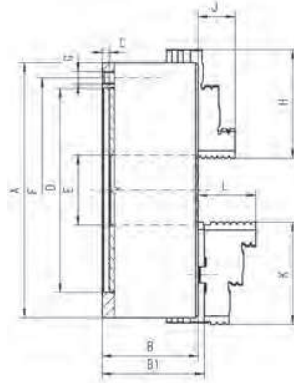


TURRET TYPE		A	BR - BP	B	C
502 - Tool holder for tool bits	Cod. Tec.	C5220502A	C5220502BRBP	C5220502B	C5220502C
C02	Euro	65,00	78,00	88,00	113,00
T Max	mm	20	25	32	32
503 - Tool holder for round shank	Cod. Tec.	C5220503A	C5220503BRBP	C5220503B	C5220503C
C02	Euro	65,00	78,00	88,00	113,00
Diameter	mm	18	20	24	26
504 - Tool holder for morse taper shank	Cod. Tec.	C5220504A	C5220504BRBP	C5220504B	C5220504C
C02	Euro	113,00	116,00	154,00	210,00
MK	mm	2	3	3	4
505 - Eccentric clamp bolt	Cod. Tec.	C5220505A	C5220505BRBP	C5220505B	C5220505C
C02	Euro	53,00	59,00	65,00	75,00
L	mm	90	108	123	141
506 - Draw-in block with spring	Cod. Tec.	C5220506A	C5220506BRBP	C5220506B	C5220506C
C02	Euro	51,00	59,00	62,00	74,00
L	mm	31	37	42	47
508 - Dowel pin	Cod. Tec.	C5220508A	C5220508BRBP	C5220508B	C5220508C
C02	Euro	15,00	19,00	21,00	28,00
Diameter	mm	10	10	12	14
509 - Stud	Cod. Tec.	C5220509A	C5220509BRBP	C5220509B	C5220509C
C02	Euro	5,00	5,00	6,00	8,00
Thread	mm	3/8"	3/8"	7/16"	1/2"
510 - Adjustment sleeve	Cod. Tec.	C5220510A	C5220510BRBP	C5220510B	C5220510C
C02	Euro	16,00	21,00	22,00	29,00
Thread	mm	3/8"	3/8"	7/16"	1/2"
511 - Sleeve locking screw	Cod. Tec.	C5220511A	C5220511BRBP	C5220511B	C5220511C
C02	Euro	6,00	6,00	8,00	10,00
Thread	mm	3/8"	3/8"	7/16"	1/2"
512 - Tool locking screw	Cod. Tec.	C5220512A	C5220512BRBP	C5220512B	C5220512C
C02	Euro	8,00	8,00	8,00	13,00
Thread	mm	3/8"	3/8"	7/16"	1/2"
513 - Puller	Cod. Tec.	C5220513A	C5220513BRBP	C5220513B	C5220513C
C02	Euro	14,00	17,00	17,00	23,00
Size	mm	7	9	9	12
515 - Square socket wrench	Cod. Tec.	C5220515A	C5220515BRBP	C5220515B	C5220515C
C02	Euro	26,00	26,00	34,00	39,00
Ch	mm	9	9	10	12
516 - Hexagonal socket wrench	Cod. Tec.	C5220516A	C5220516BRBP	C5220516B	C5220516C
C02	Euro	31,00	39,00	39,00	81,00
Size	mm	14	17	17	21
530 - Cutting blade tool holder	Cod. Tec.	-	C5220530BRBP	-	C5220530C
C02	Euro	-	138,00	-	181,00
S - Max			20x6		30x6
520 - Nib with screw and pin	Cod. Tec.	-	C5220530BRBP	-	C5220530C
C02	Euro	-	138,00	-	181,00
Thread			20x6		30x6
540 - Boring bar tool holder	Cod. Tec.	C5220540A	C5220540BRBP	C5220540B	C5220540C
C02	Euro	277,00	352,00	446,00	564,00
Diameter	mm	25	32	40	50

LTec DOUBLE GUIDE SELF-CENTRING CHUCKS - C6240

3 + 3 JAWS FOR INTERNAL/EXTERNAL

Flange, cast iron body, hardened and ground steel jaws and sliding parts, supplied with operating wrench.

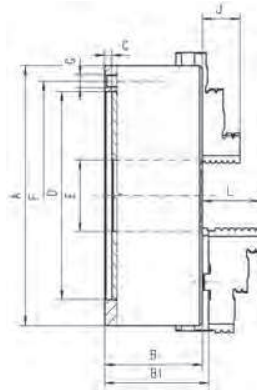


Tech. Code	C02 Euro	A mm	B mm	B1 mm	C mm	D H7 mm	E mm	F mm	G mm	J mm	L mm	Weight Kg
C6240160	723,00	160	74,5	79,3	6,5	125	42	140	6 x M10	25	43,1	10
C6240200	684,00	200	83	87,8		160	55	176		29	45	17,5
C6240250	916,00	250	96	99,8	6	200	76	224	6 x M12	34	53	29
C6240300	1.428,00	315	111	115,1	6,3	260	103	286	6 x M16	41,3	57	50

LTec SIMPLE GUIDE SELF-CENTRING CHUCKS - C6242

3 + 3 JAWS FOR INTERNAL/EXTERNAL

Flange, cast iron body, hardened steel jaws and sliding parts, supplied with operating wrench.

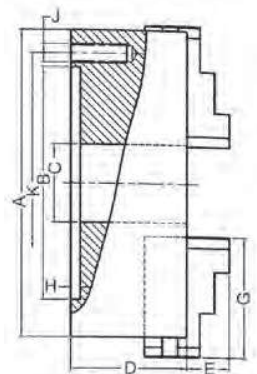


Tech. Code	C02 Euro	A mm	B mm	B1 mm	C mm	D H7 mm	E mm	F mm	G mm	J mm	L mm	Weight Kg
C6242160	323,00	160	64,5	69,3	4	125	42	140	6 x M10	32	43	10
C6242200	401,00	200	75	79,8		160	55	176		29	45	17,5
C6242250	562,00	250	85	88,8	5	200	76	224	6 x M12	34	53	29
C6242315	854,00	315	94	99,1		260	103	286	6 x M16	43	57	50

LTec SIMPLE GUIDE SELF-CENTRING CHUCKS - C6243

3 + 3 JAWS FOR INTERNAL/EXTERNAL

Flange, cast iron body, hardened steel jaws and sliding parts, supplied with operating wrench.

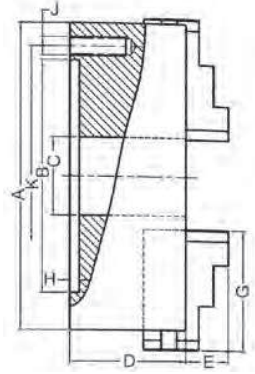


Tech. Code	C02 Euro	A mm	B H7 mm	C mm	D mm	E mm	G mm	H mm	J mm	K mm	Wrench
C6243160	297,00	160	130	45	65	30	70	5	M10	142	11
C6243200	275,00	200	165	65	75	29	85			6	
C6243250	368,00	250	206	80	85	34	105	7	M16		
C6243315	552,00	315	260	100	94	43	125				

CLTec SIMPLE GUIDE SELF-CENTRING CHUCKS - C6244

4 + 4 JAWS FOR INTERNAL/EXTERNAL

Flange, cast iron body, hardened steel jaws and sliding parts, supplied with operating wrench.



Tech. Code	C02 Euro	A mm	B H7 mm	C mm	D mm	E mm	G mm	H mm	J mm	K mm	Wrench
C6244160	336,00	160	130	45	65	30	70	5	M10	142	11
C6244200	433,00	200	165	65	75	29	85	6		180	
C6244250	591,00	250	206	80	85	34	105	7	M12	226	14
C6244315	1.011,00	315	260	100	94	43	125			285	

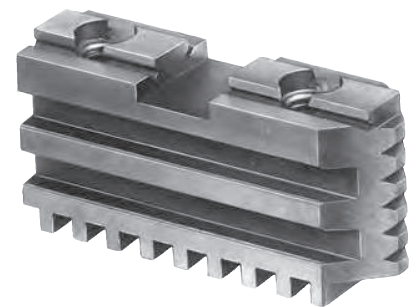
CLTec SOFT TOP JAWS - C6245

Tech. Code	C02 Euro	Dimension mm	For chucks
C6245MT160	71,00	160	C6240 / C6242 160
C6245MT200	70,00	200	C6240 / C6242 200
C6245MT250	96,00	250	C6240 / C6242 250
C6245MT315	129,00	315	C6240 / C6242 315



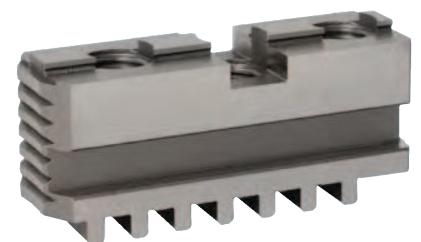
CLTec HARD MASTER JAWS DOUBLE GUIDE - C6246

Tech. Code	C02 Euro	Dimension mm	For chucks
C6246GR160	257,00	160	C6240160
C6246GR200	299,00	200	C6240200
C6246GR250	374,00	250	C6240250
C6246GR315	597,00	315	C6240315



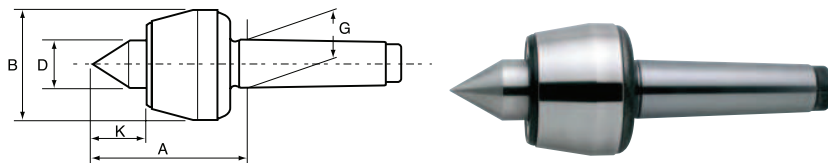
CLTec HARD MASTER JAWS SIMPLE GUIDE - C6247

Tech. Code	C02 Euro	Dimensions mm	For chucks
C6247GR160	125,00	160	C6242160
C6247GR200	126,00	200	C6242200
C6247GR250	150,00	250	C6242250
C6247GR315	227,00	315	C6242315



ROHM LIVE CENTRES - C6250

Hardened and ground steel, 60° insert.



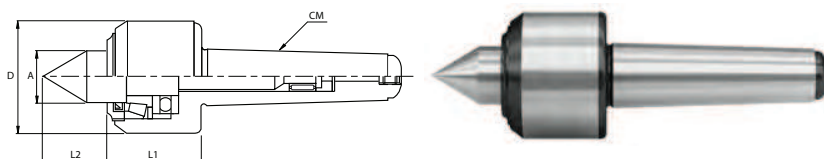
Tech. Code	C02 Euro	Mk	Concentricity error	A mm	B mm	D mm	G mm	K mm	Max. Piece kg	rpm
C62503	227,00	3	0.005	70.5	50	22	23.82	27.5	0.4	6.300
C62504	290,00	4		102.5	70	32	31.27	41	0.8	3.800
C62505	422,00	5		129	90	40	44.40	50.5	2.000	3.000

CLTec LIVE CENTRES - C6251

NEW

ITEM: C6251

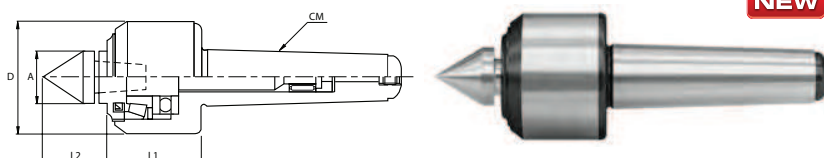
Shaped tailstock with precision bearings, recommended for lathes with medium-load machinings and not high speeds. Hardened and rectified body and shaft, permanently lubricated with special grease.



Tech. Code	C02 Euro	Mk	Concentricity error	L1 mm	D mm	A mm	L2 mm	Max weight kg	Turns/ min.
C6251CM3	186,00	3	0,005	43	55	22	27	1,0	5.000
C6251CM4	238,00	4		51	61	29	38	1,6	4.000
C6251CM5	304,00	5		55	80	38	45	3,8	3.000

ITEM: C6252

Shaped tailstock with **interchangeable tips** with precision bearings recommended for lathes with heavy-load machinings and not high speeds. Hardened and rectified body and shaft, permanently lubricated with special grease.



NEW

Tech. Code	C02 Euro	Mk	Concentricity error	L1 mm	D mm	A mm	L2 mm	Max weight kg	Turns/ min.
C6252CM3	239,00	3	0,01	43	55	22	27	1,0	5.000
C6252CM4	285,00	4		51	61	29	38	1,6	4.000
C6252CM5	346,00	5		55	80	38	45	3,8	3.000

CLTec REVOLVING TAILSTOCK IN WOODEN BOX WITH INTERCHANGEABLE INSERTS KIT - C6269

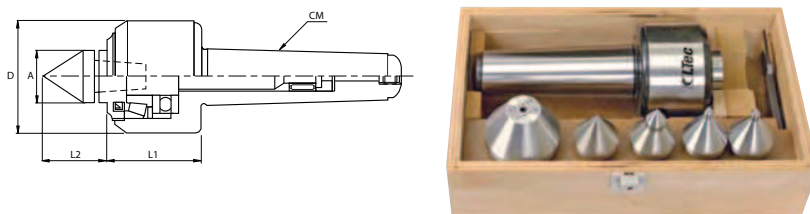
NEW

ITEM: C6269

Revolving tailstock with tips in wooden box kit.

Composition:

- Revolving tailstock centre Mod. C6252CM4
- Tips Mod: 1x C6255CM4 - 1x C6257CM4
2x C6259CM4 - 1x C6262CM4
- Tip extraction key



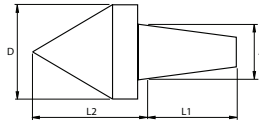
Tech. Code	C02 Euro	Mk	Concentricity error	L1 mm	D mm	A mm	L2 mm	Max weight kg	Turns/ min.
C6269CM4	539,85	4	0,01	51	61	29	40	1,6	4.000

LTec INSERTS FOR LIVE CENTRES - C6255

NEW

ITEM: C6255

Standard interchangeable tips for tailstock mod. C6252.
Hardened and rectified body.



Tech. Code	C02 Euro	For live centres	D mm	A mm	L1 mm	L2 mm
C6255CM3	32,45	MK3	25	13,458	25	30
C6255CM4	35,00	MK4	29	15,303	27	33
C6255CM5	38,35	MK5	35	20,625	28	38

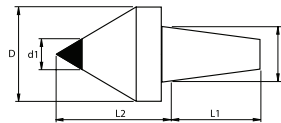
LTec INSERTS FOR LIVE CENTRES - C6256

NEW

ITEM: C6256

Standard interchangeable tips with carbide point for tailstock mod. C6252.

Hardened and rectified body.



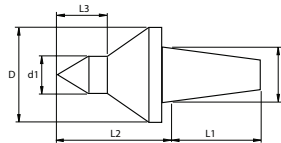
Tech. Code	C02 Euro	For live centres	D mm	d1 mm	A mm	L1 mm	L2 mm
C6256CM3	56,64	MK3	25	10	13,458	25	30
C6256CM4	58,41	MK4	29	12	15,303	27	33
C6256CM5	64,90	MK5	35	14	20,625	28	38

LTec INSERTS FOR LIVE CENTRES - C6257

NEW

ITEM: C6257

Slim interchangeable tips for tailstock mod. C6252.
Hardened and rectified body.



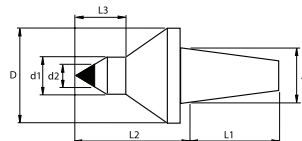
Tech. Code	C02 Euro	For live centres	D mm	d1 mm	A mm	L1 mm	L2 mm	L3 mm
C6257CM3	40,12	MK3	25	12	13,458	25	36	16
C6257CM4	42,00	MK4	29		15,303	27	39	
C6257CM5	45,43	MK5	35	15	20,625	28	44	19

LTec INSERTS FOR LIVE CENTRES - C6258

NEW

ITEM: C6258

Slim interchangeable tips with carbide point for tailstock mod. C6252.
Hardened and rectified body.



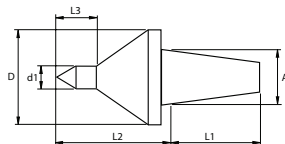
Tech. Code	C02 Euro	For live centres	D mm	d1 mm	d2 mm	A mm	L1 mm	L2 mm	L3 mm
C6258CM3	68,44	MK3	25	12	7	13,458	25	36	16
C6258CM4	71,98	MK4	29		8	15,303	27	39	
C6258CM5	77,88	MK5	35	15	12	20,625	28	44	19

CLTec INSERTS FOR LIVE CENTRES - C6259

NEW

ITEM: C6259

Standard interchangeable extra-small tips for tailstock mod. C6252.
Hardened and rectified body.



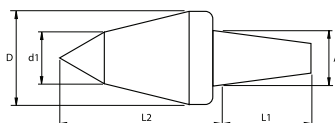
Tech. Code	C02 Euro	For live centres	D mm	d1 mm	A mm	L1 mm	L2 mm	L3 mm
C6259CM3	40,12	MK3	25	7	13,458	25	36	12
C6259CM4	42,00	MK4	29		15,303	27	39	
C6259CM5	45,43	MK5	35		20,625	28	44	

CLTec INSERTS FOR LIVE CENTRES - C6260

NEW

ITEM: C6260

Extended interchangeable tips for tailstock mod. C6252.
Hardened and rectified body.



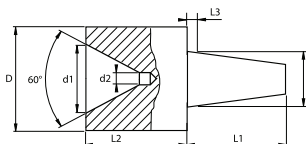
Tech. Code	C02 Euro	For live centres	D mm	d1 mm	A mm	L1 mm	L2 mm
C6260CM3	40,12	MK3	25	8	13,458	25	47
C6260CM4	41,89	MK4	29	10	15,303	27	52
C6260CM5	45,43	MK5	35	12	20,625	28	61

CLTec INSERTS FOR LIVE CENTRES - C6261

NEW

ITEM: C6261

Interchangeable tailstock truncated cone for tailstock mod. C6252.
Hardened and rectified body.



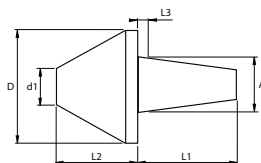
Tech. Code	C02 Euro	For live centres	D mm	d1 mm	A mm	L1 mm	L2 mm	L3 mm
C6261CM3	58,41	MK3	29	23	13,458	27	30	2
C6261CM4	58,41	MK4			15,303	29		
C6261CM5	58,41	MK5	35	27	20,625	30	35	

CLTec CUSPS FOR TAILSTOCK - C6262

NEW

ITEM: C6262

Interchangeable tips for tubular workpieces for tailstock mod. C6252.
Hardened and rectified body.

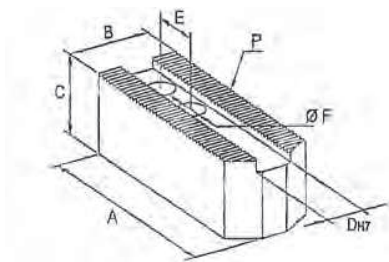


Tech. Code	C02 Euro	For live centres	D mm	d1 mm	A mm	L1 mm	L2 mm	L3 mm
C6262CM3	61,95	MK3	59	26	13,458	27	35	2
C6262CM4	62,00	MK4			15,303	29		
C6262CM5	61,95	MK5			20,625	30		

LTec SOFT JAWS - C6270

ITEM: STANDARD JAWS

Standard jaws for self-centering Kitagawa chucks.

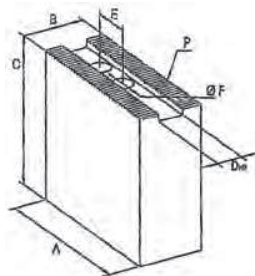


Tech. Code	C02 Euro	Self-centering chucks Ø mm	A mm	B mm	C mm	D h7 mm	E mm	F Ø mm	Go	
C6270165	7,50	165	72	30	30	12	20	11	1,5 x 60°	3
C6270210	9,50	210	95	35	35	14	25	13		
C6270254	12,50	254	110	40	40	16	30	17		
C6270304	16,50	304	130	50	50	21		21		
C6270381	27,50	381 - 454	165	60	70	22	43	21		

LTec SOFT JAWS - C6275

ITEM: HIGH VERSION

High version jaws for self-centering Kitagawa chucks.

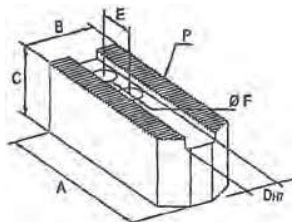


Tech. Code	C02 Euro	Self-centering chucks Ø mm	A mm	B mm	C mm	D h7 mm	E mm	F Ø mm	Go	
C6275165	12,00	165	72	30	50	12	20	11	1,5 x 60°	3
C6275210	13,00	210	95	35		14	25	13		

LTec SOFT JAWS - C6280

ITEM: STANDARD JAWS

Standard jaws for self-centering Autoblok SMW pneumatic - hydraulic chucks.

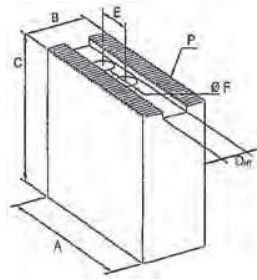


Tech. Code	C02 Euro	Self-centering chucks Ø mm	A mm	B mm	C mm	D h7 mm	E mm	F Ø mm	Go	
C6280200210	9,50	200 - 210	90	40	40	17	23	13	1/16" x 90°	3
C6280200225	9,50	200 - 210 - 225	105		40					
C6280250X45	12,00	250	110	45	21	30	17			
C6280250X50	11,50		110	45						
C6280315	13,00	315	125	50	50	21	30	17		
C6280400	19,50	400	140	60	60	21	30	17		

CLtec SOFT JAWS - C6285

ITEM: HIGH VERSION

High version jaws for self-centering Autoblok SMW pneumatic - hydraulic chucks.



Tech. Code	C02 Euro	Self-centering chucks Ø mm	A mm	B mm	C mm	D h7 mm	E mm	F mm	
C6285165	14,00	165 - 175	70	35	50	14	16,5	1/16" x 90°	3
C6285200	15,50	200 - 210	90	40	60	17	23		

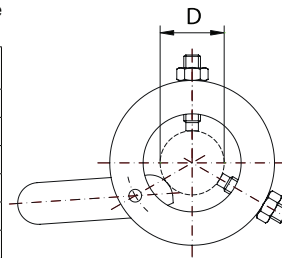
CLtec GRINDING CARRIERS IN STEEL - C6287

NEW

The fast clamp grinding carrier are used to pull the work piece when it is fixed between two drills.

They are highly useful in mass grinding processes; in fact their high speed opening and closing allows a significant reduction in the time necessary for changing the piece on the machine tool, which also means cost savings.

Tech. Code	C02 Euro	D mm
C6287000	63,00	0 - 8
C6287008	66,00	8 - 16
C6287016	69,00	16 - 24
C6287024	70,00	24 - 32
C6287032	73,00	32 - 40
C6287040	77,00	40 - 48
C6287056	82,00	56 - 64
C6287064	83,00	64 - 72
C6287072	85,00	72 - 80
C6287080	102,00	80 - 90
C6287090	107,00	90 - 100
C6287100	112,00	100 - 110
C6287110	116,00	110 - 120



RINGS FOR TURNING JAWS - C6290

ITEM: C6290

Complete set of 67 increasing hardened rings, 2 mm from Ø 14 mm up to Ø 146 mm, unmatched jaw turning precision, highly effective due to the ring choice, reduced set-up time, a minor investment easy to depreciate.

Tech. Code	C02 Euro	Ø A mm	Ø B mm	C mm
C629014-146	545,00	14 - 22	7	7
		24 - 40	12	7
		42 - 58	22	9
		60 - 66	30	9
		68 - 86	40	9
		88 - 106	50	9
		108 - 126	60	9
128 - 146	80	9		

