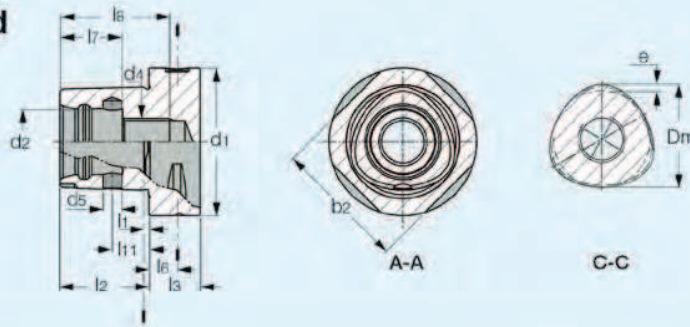


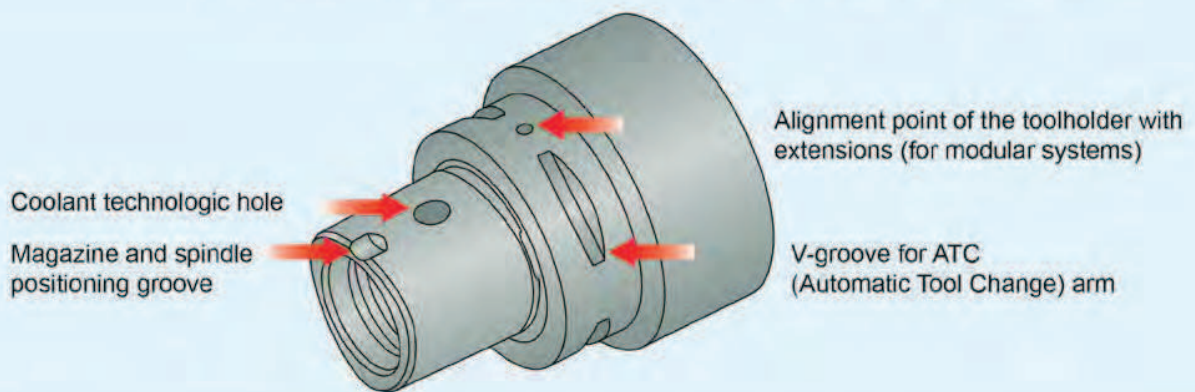
Toolholder Standard



CAMFIX	b_2	$d_1^{+0.1}$	d_2	d_4	$d_5^{+0.1}$	D_m	e	l_1	$l_2^{+0.1}$	$l_{3 \min}$	$l_6^{+0.15}$	$l_7^{+0.15}$	$l_{8 \min}$	$l_{11}^{+0.1}$
C3	28,3	32	15	M12x1,5	3,6	22	0,7	2,5	19	15	6	13	25	8
C4	35,3	40	18	M14x1,5	4,6	28	0,9	2,5	24	20	8	15	30	11,5
C5	44,4	50	21	M16x1,5	6,1	35	1,12	3	30	20	10	20	37	14
C6	55,8	63	28	M20x2	8,1	44	1,4	3	38	22	12	27	47	15,5
C8	71,1	80	32	M20x2	9,1	55	2	3	48	30	12	28	48	25
C8X	88,7	100	32	M20x2	9,1	55	2	3	48	32	16	28	48	25



CAMFIX - ISO 26623-1 Standard Quick Change Shanks



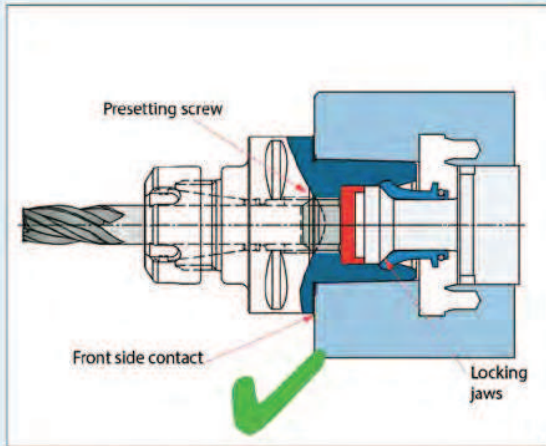
Features

- **Symmetrical design:** due to the symmetrical design, the torque load is distributed on the polygon, providing a self-centering effect.
- **Rigidity:** the CAMFIX clamping mechanism is extremely rigid against bending forces.
- **Precision:** the taper and face contact ensure high repeatability within 2 microns, when operated with an automatic tool changer.

CAMFIX Chucking Instructions

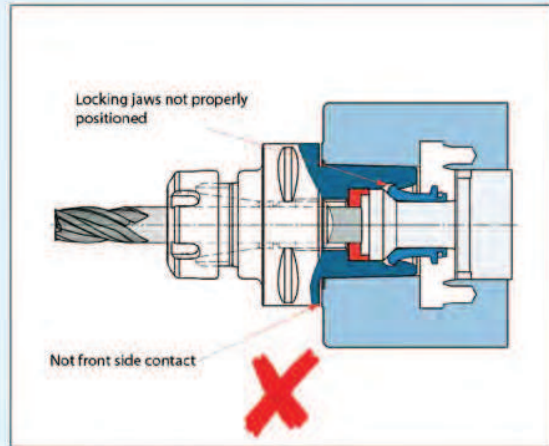
Please be careful when clamping cylindrical shank cutting tools into CAMFIX holders such as ER collet chucks or EM holders.

In cases when the diameter of the shank is smaller than the CAMFIX through hole, it may penetrate into the drawbar mechanism area and prevent proper clamping.



Correct clamping

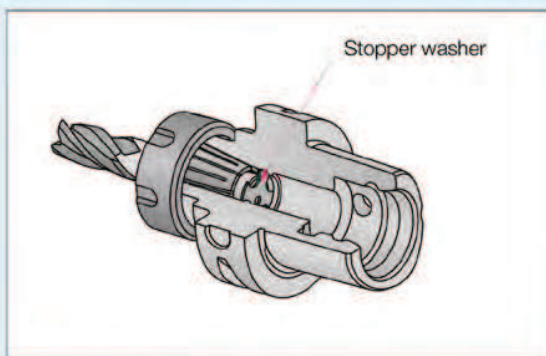
Use a preset screw to prevent the cutter shank from entering into the clamping mechanism zone, so the drawbar locking jaws can function correctly.



Wrong clamping

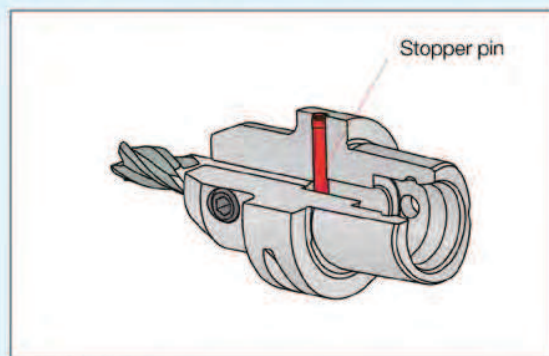
The cutter shank enters into the locking mechanism zone, preventing the drawbar locking jaws to reach their correct clamping position.

In order to prevent too deep insertion of the cutting tools, the short length ER16, 20, 25, 32, 40 collet chucks and EM 6-50 mm endmill holders are equipped with permanent stoppers.



ER chucks

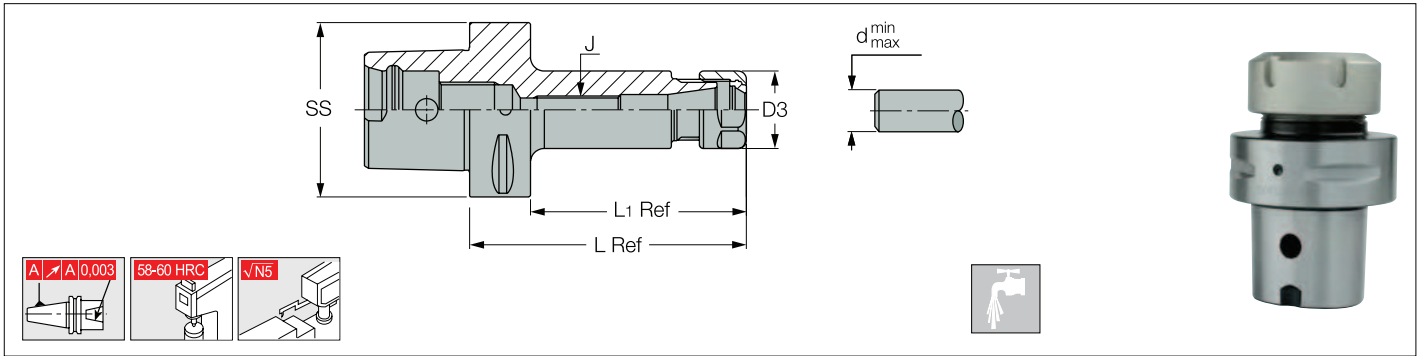
A special washer is installed as a permanent stopper.



EM holders

A special pin is installed as a permanent stopper.

ER COLLET CHUCKS DIN6499 - ISO26623-1 - C2310



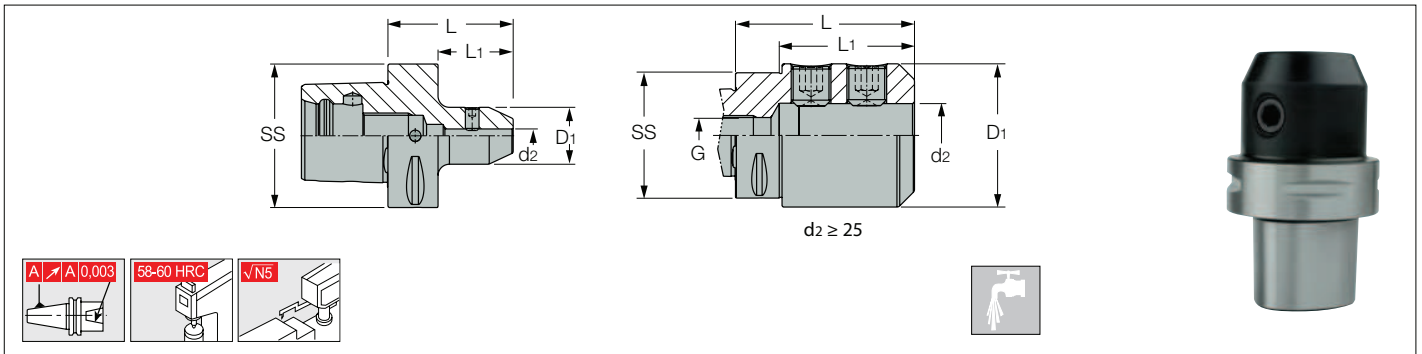
Tech. Code	C01 Euro	Description	SS	C Capacity	D3 mm	L mm	L1 mm	J
C2310C616100	240,00	C6 ER16X100	63	0,5 - 10	28	100	78	M10
C2310C616130	280,00	C6 ER16X130				130	108	
C2310C616160	312,00	C6 ER16X160				160	138	
C2310C63260	280,00	C6 ER32X60		2 - 20	50	60	36	-
C2310C632100	280,00	C6 ER32X100				100	78	M22 x 1,5
C2310C632130	319,00	C6 ER32X130				130	108	

- RING NUTS Page C.63

- COLLETS ER Page C.47

- WRENCH Page C.69

WELDON CHUCKS - ISO26623-1 - C2320

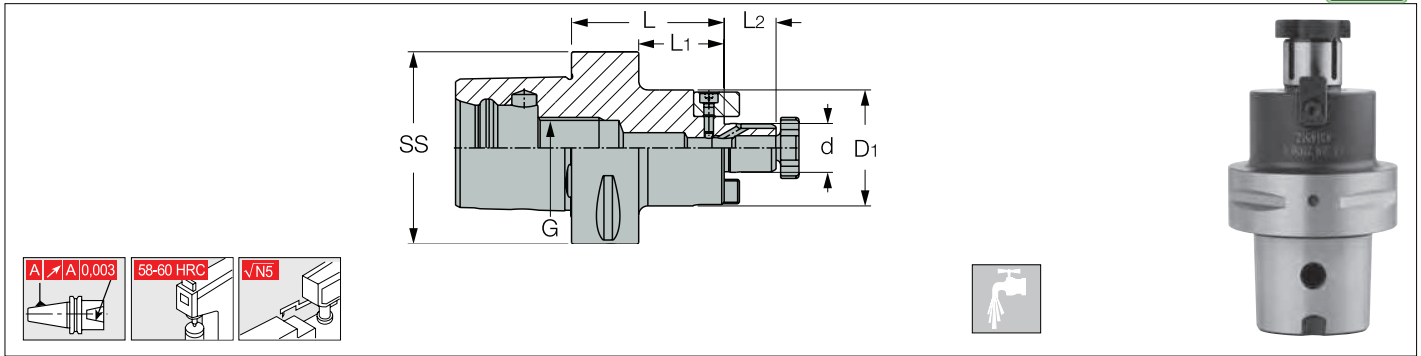


Tech. Code	C01 Euro	Description	SS	d2 mm	D1 mm	L mm	L1 mm	G
C2320C60655	258,00	C6 EM 6X55	63	6	25	55	33	M20
C2320C60855	258,00	C6 EM 8X55		8	28			
C2320C61060	234,00	C6 EM 10X60		10	35			
C2320C61260	234,00	C6 EM 12X60		12	42	60	38	
C2320C61665	234,00	C6 EM 16X65		16	48			
C2320C62065	234,00	C6 EM 20X65		20	52			
C2320C62580	282,00	C6 EM 25X80		25	65	65	43	
C2320C63290	290,00	C6 EM 32X90		32	72	80	58	
						90	68	

- DOWEL Page C.68

ETI FIXED-DRIVE SHELL MILL HOLDER - ISO26623-1 - C2340

+ COD



Tech. Code	C01 Euro	Description	SS	d mm	D1 mm	L mm	L2 mm	L1 mm	G
C2340C61650	238,00	C6 SEM 16X50 C	63	16	38	50	17	28	M20
C2340C62250	238,00	C6 SEM 22X50 C		22	47		19		
C2340C62760	279,00	C6 SEM 27X60 C		27	58	60	21	38	

- WRENCH Page C.69

- SCREWS Page C.69

