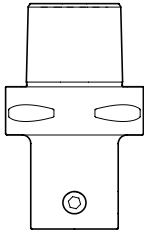
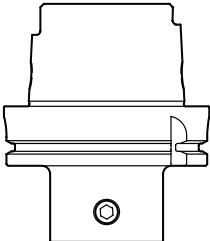
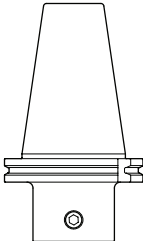
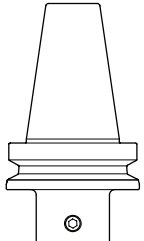
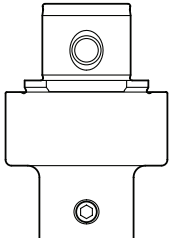
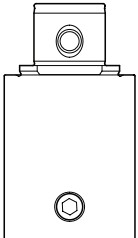

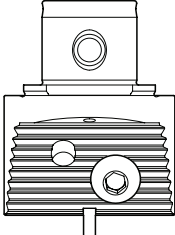
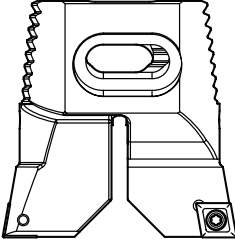
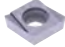
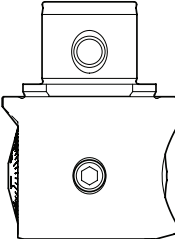
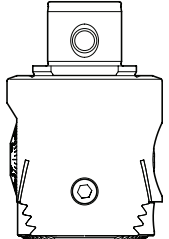
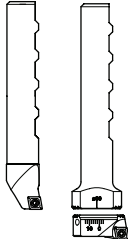
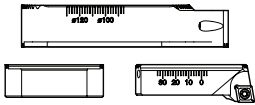
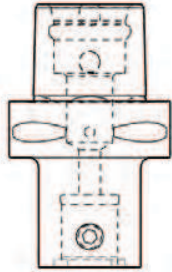


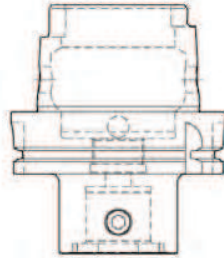
APPLICATION INDEX - BORING

<p>TOOL HOLDERS</p>	<p>ISO 26623-1</p>  <p>PSC System 20/55</p> <p>Page 97</p>	<p>DIN 69893</p>  <p>HSK-A System 20/55</p> <p>Page 97</p>	<p>DIN 69871 A/D</p>  <p>SK-A System 20/55</p> <p>Page 97</p>	<p>MAS403-BT</p>  <p>BT-A System 20/55</p> <p>Page 97</p>
<p>REDUCTION EXTENSION</p>	<p>REDUCTION ADAPTERS</p>  <p>System 25/55</p> <p>Page 98</p>	<p>Extensions</p>  <p>System 20/55</p> <p>Page 98</p>		
<p>ROUGHING SYSTEM</p> <p>CCMT 0602... LPM CCMT 09T3... LPM CCMT 1204... LPM</p> 	<p>ROUGHING HEADS 142</p>  <p>System 20/55 D 23,50 - 87,50</p> <p>Page 98</p>	<p>ROUGHING INSERT HOLDERS</p>  <p>D 23,50 - 87,50</p> <p>Page 98</p>		
<p>FINISHING SYSTEM</p> <p>CCGT 0602... L CCGT 09T3... L</p> 	<p>FINISHING HEAD 262</p>  <p>System 55 9,75 - 88,10</p> <p>Page 99</p>	<p>FINISHING HEAD 261</p>  <p>System 55 3,00 - 320,00</p> <p>Page 99</p>	<p>FINISHING BORING BARS</p>  <p>D 9,75 - 88,10</p> <p>Page 100</p>	<p>INSERT</p>  <p>D 86,00 - 320,00</p> <p>Page 99</p>

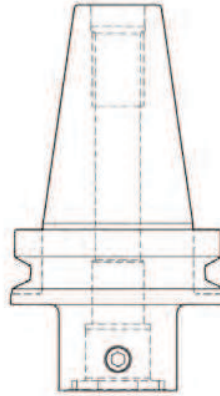
ISO 26623-1
PSC System 20/55



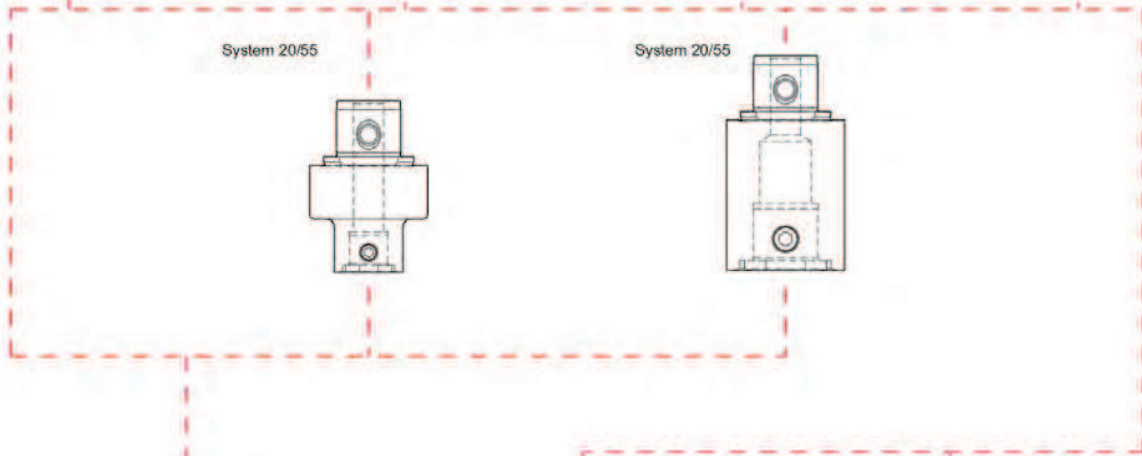
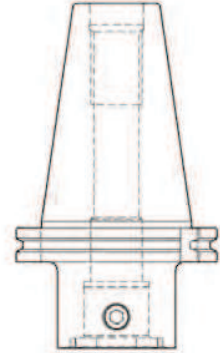
DIN 69893
HSK-A System 20/55



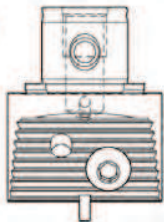
DIN 69871 A/D
SK-A System 20/55



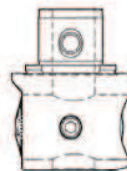
MAS403
BT-A System 20/55



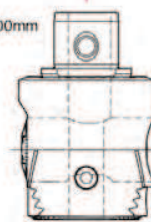
System 20/55
D 23,50 - 87,50mm



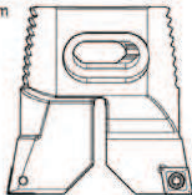
System 20/55
D 9,75 - 88,10mm



System 55
D 3,00 - 320,00mm



D 23,50 - 87,50mm



D 9,75 - 53,10mm



D 29,75 - 88,10mm



D 86,00 - 320,00mm



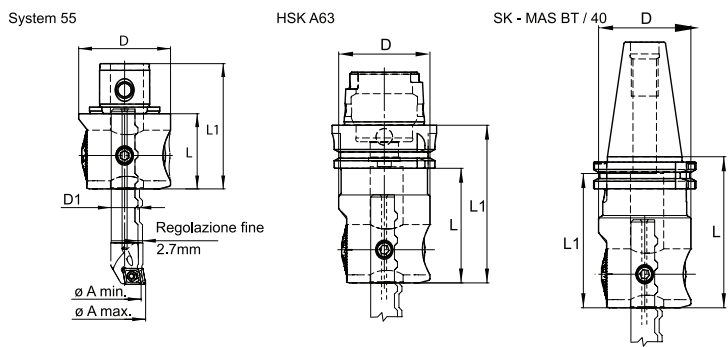
D 29,75 - 88,10mm



D 86,00 - 320,00mm



SWISS MBM HIGH-PRECISION REAMING TOOL KIT D 9.75 - D 88.10



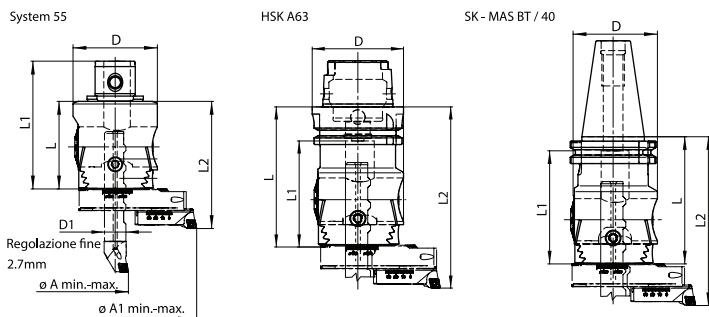
FINISHING KIT D9.75 - 30.10

B9B90	Tech. Code	B02 Euro	Denomination	Coupling	D mm	D1 mm	A min mm	A max mm	L mm	L1 mm
KIT	B9B90M30	1.709,00	528.000.030	SYSTEM 55	55	16	9,75	30,1	45	75
	B9B90H30	1.987,00	528.063.030	HSK-A 63					95	70
	B9B90S30	1.987,00	528.415.030	SK40 A/D					90	80
	B9B90B30	1.987,00	528.412.030	BT40 A/D						

FINISHING KIT D9.75 - 88.10

B9B85	Tech. Code	B02 Euro	Denomination	Coupling	D mm	D1 mm	A min mm	A max mm	L mm	L1 mm
KIT	B9B85M88	2.324,00	527.000.088	SYSTEM 55	55	16	9,75	88,1	45	75
	B9B85H88	2.686,00	527.063.088	HSK-A 63					95	70
	B9B85S88	2.686,00	527.415.088	SK40 A/D					90	80
	B9B85B88	2.686,00	527.412.088	BT40 A/D						

SWISS MBM HIGH-PRECISION REAMING TOOL KIT D 9.75 - D 164



FINISHING KIT D9.75 - 164

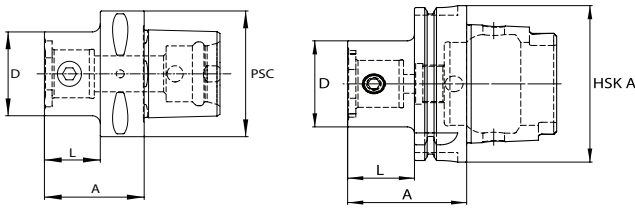
B9B80	Tech. Code	B02 Euro	Denomination	Coupling	D mm	D1 mm	A min mm	A max mm	L mm	L1 mm	L2 mm
KIT	B9B80M164	2.834,00	530.000.164	SYSTEM 55	63	16	9,75	164	66	96,0	95
	B9B80H164	2.928,00	530.063.164	HSK-A 63					96	72,5	125
	B9B80S164	3.042,00	530.415.164	SK40 A/D					91	81,0	120
	B9B80B164	2.928,00	530.412.164	BT40 A/D							

KIT COMPOSITION

	Coupling	Countersinking micrometer head	Boring insert holder	Boring insert holder	Boring insert holder	Boring insert holder	Adjustable boring bars	Adjustable boring bars	Alluminum bridge	Insert holder	Insert holder
KIT	9,75 - 30,10	B9B505502	B9B551006	B9B551506	B9B552006	B9B552506	-	-	-	-	-
	9,75 - 88,10	B9B505502	B9B551006	B9B551506	B9B552006	B9B552506	B9B601601	B9B601602	-	B9B650106	B9B650206
	9,75 - 164,00	B9B455501	B9B551006	B9B551506	B9B552006	B9B552506	B9B601601	B9B601602	B9B70164	B9B650106	B9B650206

Kit supplied in black plastic box, hex and torx keys.

SWISS MBM PSC ISO 26623-1 AND HSK A DIN 69893 MODULAR MASTER SHANKS HOLDERS



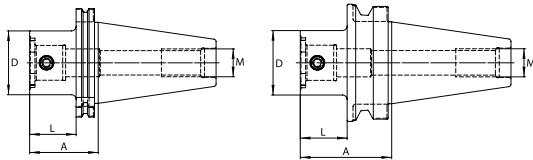
SHANK

B9B05	Tech. Code	B02 Euro	Description	PSC	System D mm	L mm	A mm	Grub screw
HOLDERS	B9B050620	361,00	102.163.201	63	20	28	50	800.000.200
	B9B050625	361,00	102.163.251		25			800.000.250
	B9B050632	361,00	102.163.321		32			800.000.320
	B9B050642	361,00	102.163.421		42			800.000.420
	B9B050655	361,00	102.163.551		55			800.000.550

SHANK

B9B10	Tech. Code	B02 Euro	Description	HSK-A	System D mm	L mm	A mm	Grub screw
SPINDLE	B9B100620	361,00	102.063.201	63	20	24	50	800.000.200
	B9B100625	361,00	102.063.251		25			800.000.250
	B9B100632	361,00	102.063.321		32			800.000.320
	B9B100642	361,00	102.063.421		42			800.000.420
	B9B100655	334,00	102.063.551		55			40

SWISS MBM DIN 69871 A/D AND MAS403 BT MODULAR HOLDERS



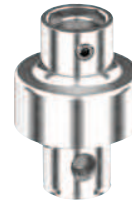
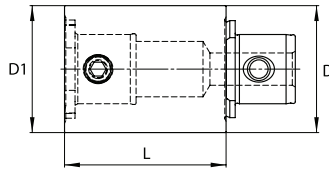
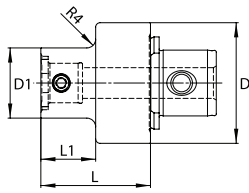
SHANK

B9B15	Tech. Code	B02 Euro	Description	SK A/D	System D mm	L mm	A mm	Grub screw
SPINDLES	B9B150420	286,00	102.415.201	40	20	15	34,1	800.000.200
	B9B150425	286,00	102.415.251		25	25	44,1	800.000.250
	B9B150432	286,00	102.415.321		32			800.000.320
	B9B150442	286,00	102.415.421		42			30
	B9B150455	246,00	102.415.551		55	40	59,1	800.000.550
	B9B150455L	350,00	102.415.552		100	119,1		

SHANK

B9B20	Tech. Code	B02 Euro	Description	BT A/D	System D mm	L mm	A mm	Grub screw
SPINDLES	B9B200420	286,00	102.412.201	40	20	15	42	800.000.200
	B9B200425	286,00	102.412.251		25	25	52	800.000.250
	B9B200432	286,00	102.412.321		32			800.000.320
	B9B200442	293,00	102.412.421		42			30
	B9B200455	246,00	102.412.551		55	40	67	800.000.550
	B9B200455L	350,00	102.412.552		100	127		

S W I S S M B M MODULAR REDUCTION AND EXTENSION ADAPTERS



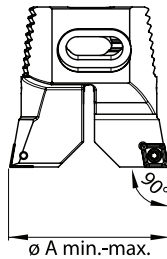
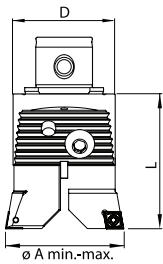
REDUCTION

B9B25	Tech. Code	B02 Euro	Description	System D mm	System D1 mm	L1 mm	L mm	Grub screw
	B9B252520	190,00	122.250.201	25	20	15	30	800.000.200
	B9B253220	190,00	122.320.201	32				
	B9B253225	190,00	122.320.251	42	25	25	40	800.000.250
	B9B254225	190,00	122.420.251					
	B9B254232	190,00	122.420.321	55	32	25	45	800.000.320
	B9B255532	224,00	122.550.321				50	
	B9B255542	224,00	122.550.421				55	

EXTENSIONS

B9B30	Tech. Code	B02 Euro	Description	System D mm	System D1 mm	L mm	Grub screw
	B9B302025	174,00	132.200.001	20	20	25	800.000.200
	B9B302530	174,00	132.250.001	25	25	30	800.000.250
	B9B303240	183,00	132.320.001	32	32	40	800.000.320
	B9B304250	200,00	132.420.001	42	42	50	800.000.420
	B9B305570	220,00	132.550.001	55	55	70	800.000.550

S W I S S M B M REAMING HEADS TWO-FLUTE ROUGHING END MILLS - D 23,50 - D 87,50



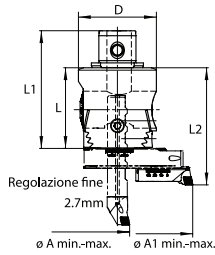
ROUGHING HEADS

B9B35	Tech. Code	B02 Euro	Denomination	Z	System D mm	A min. mm	A max. mm	L mm	Insert holder	Clamping screw	Washer
	B9B352040	298,00	142.200.000	2	20	23,50	30,50	40	162.200.006	840.142.200	841.142.200
	B9B352550	314,00	142.250.000		25	29,50	40,10	50	162.250.006	840.142.250	841.142.250
	B9B353265	353,00	142.320.000		32	39,50	50,50	65	162.320.009	840.142.320	841.142.320
	B9B354290	411,00	142.420.000		42	49,50	66,50	90	162.420.009	840.142.420	841.142.420
	B9B3555115	470,00	142.550.000		55	65,50	87,50	115	162.550.112	840.142.550	841.142.550

ROUGHING INSERT HOLDERS

B9B40	Tech. Code	B02 Euro	Denomination	Z	A min. mm	A max. mm	Modular head	Insert	Insert screw
	B9B402006	334,00	162.200.006	2	23,50	30,50	142.200.000	CC..0602...	843.006.000
	B9B402506	349,00	162.250.006		29,50	40,10	142.250.000		
	B9B403209	374,00	162.320.009		39,50	50,50	142.320.000	CC...09T3...	843.009.000
	B9B404209	426,00	162.420.009		48,50	66,50	142.420.000		
	B9B405512	556,00	162.550.112		65,50	87,50	142.550.000		

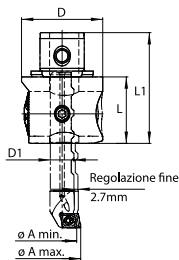
swiss MBM SINGLE-FLUTE FINE REAMING HEADS - D 9.75 - D 320



FINISHING HEADS

B9B45	Tech. Code	B02 Euro	Denomination	Z	System D mm	D1 mm	A mm min - max	A1 mm min - max	L mm	L1 mm	L2 mm	Clamping screw	Fitting screw	Fitting screw seat
	B9B455501	1.343,00	261.550.065	1	55	63	9,75 - 88,10	86 - 320	66	96	95	881.261.016	881.261.020	883.261.016

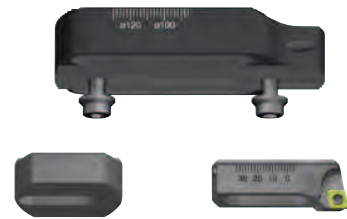
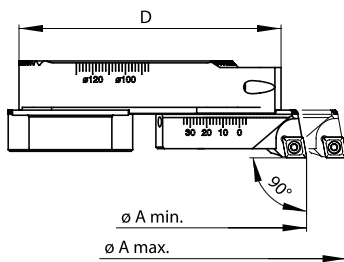
swiss MBM SINGLE-FLUTE FINE REAMING HEADS- D3 - D88,10



FINISHING HEADS

B9B50	Tech. Code	B02 Euro	Denomination	Z	System D mm	D1 mm	A min. mm	A max. mm	L mm	L1 mm	Clamping screw	Fitting screw
	B9B505502	1.059,00	262.550.045	1	55	16	3	88,10	45	75	881.262.420	882.262.420

swiss MBM ALUMINUM BRIDGE BARS AND ACCESSORIES - D 86 - D 320



BRIDGE BARS

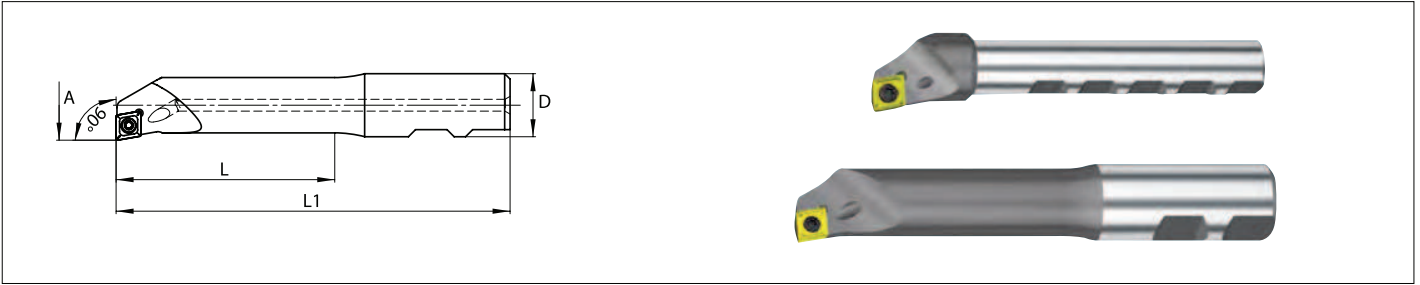
B9B70	Tech. Code	B02 Euro	Denomination	D mm	A min. mm	A max. mm	Air hole	Clamping screw
	B9B700164	246,00	886.086.164	80	86	164	With	883.261.016
	B9B700320	369,00	886.162.320	158	162	320		

INSERT HOLDERS

B9B65	Tech. Code	B02 Euro	Denomination	Z	A min. mm	A max. mm	Insert	Shank	Air hole	Insert screw
	B9B650206	258,00	253.048.006	1	86	320	CC.. 06 02..	271.048.088	With	843.006.000
	B9B650109	268,00	253.048.009				CC.. 09 T3..			843.009.000

BALANCER

B9B75	Tech. Code	B02 Euro	Denomination	Clamping screw
	B9B7501	92,00	886.038.045	883.261.016



FINE BORING BARS														
B9B55	Tech. Code	B02 Euro	Denomination	Z	D mm	A min mm	A max mm	L mm	L1 mm	Insert	Air hole	Insert screw		
BARENI	B9B551006	192,00	272.010.006	1	16	9,75	15,10	30	75	CC .. 06 02 ..	With	843.007.000		
	B9B551206	192,00	272.012.006			11,75	17,10	37	80					
	B9B551406	192,00	272.014.006			13,75	19,10	43	85					
	B9B551506	192,00	272.015.006			14,75	20,10	51	90					
	B9B551606	192,00	272.016.006			15,75	21,10	57	95					
	B9B551806	192,00	272.018.006			17,75	23,10	67	100					
	B9B552006	220,00	272.020.006			19,75	25,10	72	105					
	B9B552009	220,00	272.020.009			21,75	27,10	77	110					
	B9B552209	220,00	272.022.009			24,75	30,10	82	115				CC .. 06 02	843.006.000
	B9B552506	220,00	272.025.006			27,75	33,10						CC .. 09 T3 ..	843.009.000
	B9B552509	220,00	272.025.009			29,75	35,10			CC .. 06 02 ..	843.006.000			
	B9B552809	230,00	272.028.009			31,75	37,10			CC .. 09 T3 ..	843.009.000			
	B9B553009	230,00	272.030.006			34,75	40,10			CC .. 06 02 ..	843.006.000			
	B9B553209	230,00	272.032.009			38,75	44,10			CC .. 09 T3 ..	843.009.000			
	B9B553506	230,00	272.035.006			42,75	48,10			CC .. 06 02 ..	843.006.000			
	B9B553509	230,00	272.035.009			47,75	53,10			CC .. 09 T3 ..	843.009.000			
	B9B553909	248,00	272.039.009											
	B9B554309	259,00	272.043.009											
	B9B554809	289,00	272.048.009											



TOOL HOLDERS											
B9B60	Tech. Code	B02 Euro	Denomination	D mm	A min. mm	A max. mm	L mm	L1 mm	Holder	Air hole	Clamping screw
	B9B601601	155,00	271.030.048	16,00	29,75	48,10	85,00	115,00	253.030.006	With	883.261.016
	B9B601602	155,00	271.048.088		47,75	88,10			253.048....		

INSERT HOLDERS											
B9B65	Tech. Code	B02 Euro	Denomination	Z	A min. mm	A max. mm	Insert	Shank	Air hole	Insert screw	
SEGGI	B9B650106	234,00	253.030.006	1	29,75	48,10	CC..06 02..	271.030.048	With	843.006.000	
	B9B650206	258,00	253.048.006		47,75	88,10	CC.. 06 02..	271.048.088			
	B9B650109	268,00	253.048.009		CC.. 09 T3..	843.009.000					