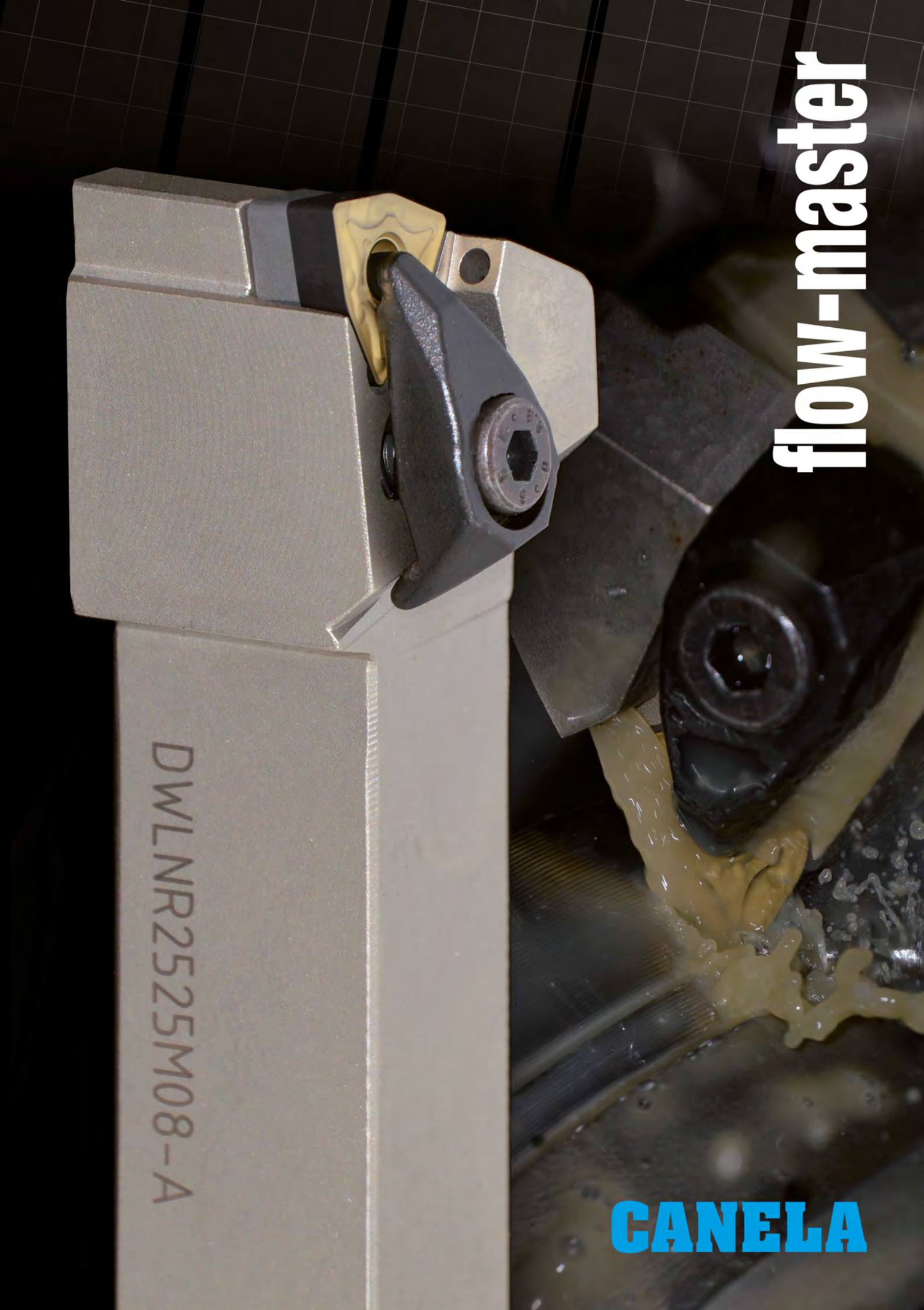
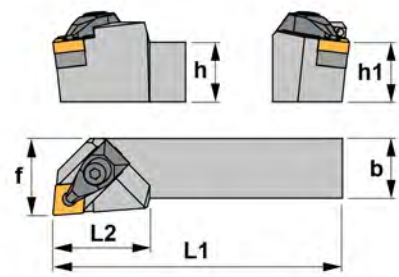


flow-master

DWLN R2525M08-A

CANELA

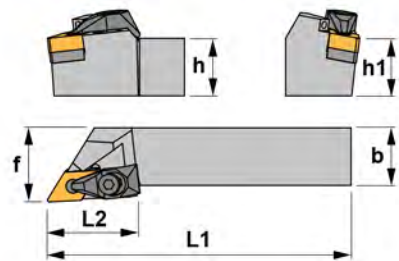




DCLN 95°-A

Reference	h=h1	b	L1	f	Insert size						
DCLN R/L 2020 K12-A	20	20	125	25	CN.. 1204..	ICSN-442	1766	2712	1696	4295	5004
DCLN R/L 2525 M12-A	25	25	150	32	CN.. 1204..	ICSN-442	1766	2712	1696	4295	5004
DCLN R/L 3232 P12-A	32	32	170	40	CN.. 1204..	ICSN-442	1766	2712	1696	4295	5004
DCLN R/L 3232 P16-A	32	32	170	40	CN.. 1606..	ICSN-533	1778	2716	1698	4295	5004

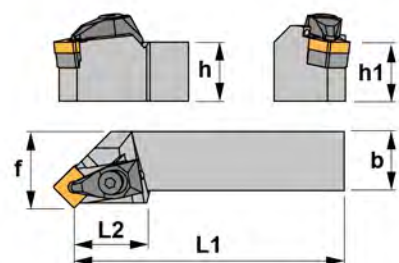
Negative 80° rhombic inserts.



DDJN 93°-A

Reference	h=h1	b	L1	f	Insert size						
DDJN R/L 2020 K11-A	20	20	125	25	DN.. 1104..	IDSN-322	1764	2708	1695	4294	5003
DDJN R/L 2020 K15-A	20	20	125	25	DN.. 1506..	IDSN-432	1766	2712	1696	4295	5004
DDJN R/L 2525 M15-A	25	25	150	32	DN.. 1506..	IDSN-432	1766	2712	1696	4295	5004
DDJN R/L 3232 P15-A	32	32	170	40	DN.. 1506..	IDSN-432	1766	2712	1696	4295	5004

Negative 55° rhombic inserts.

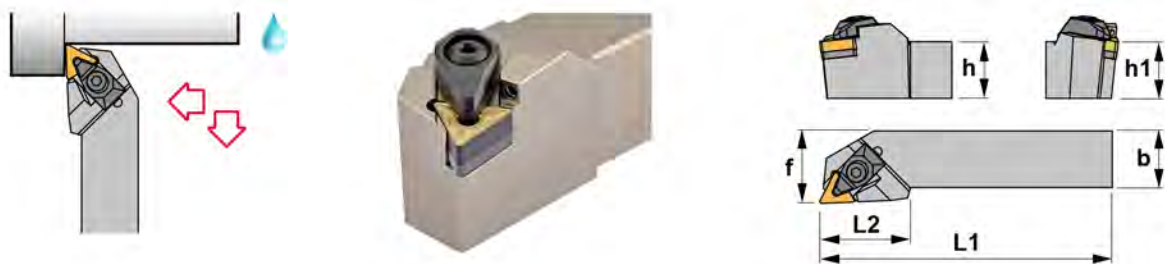


DSSN 45°-A

Reference	h=h1	b	L1	f	Insert size						
DSSN R/L 2020 K12-A	20	20	125	25	SNM.. 1204..	ISSN-442	1766	2712	1696	4295	5004
DSSN R/L 2525 M12-A	25	25	150	32	SNM.. 1204..	ISSN-442	1766	2712	1696	4295	5004
DSSN R/L 3232 P19-A	32	25	170	32	SNM.. 1906..	ISSN-633	1770	2719	1696	4295	5004

Negative square inserts.





DTJN 93°-A

Reference	h=h1	b	L1	f	Insert size
DTJN R/L 2020 K16-A	20	20	125	25	TNM.. 1604... ITSN-342 1764 2708 1695 4294 5003
DTJN R/L 2525 M16-A	25	25	150	32	TNM.. 1604... ITSN-342 1764 2708 1695 4294 5003

Negative triangular inserts.



DVJN 93°-A

Reference	h=h1	b	L1	f	Insert size
DVJN R/L 2020 K16-A	20	20	125	25	VN.. 1604.. IVSN-322 1764 2708 1695 4294 5003
DVJN R/L 2525 M16-A	25	25	150	32	VN.. 1604.. IVSN-322 1764 2708 1695 4294 5003
DVJN R/L 3232 P16-A	32	32	170	38	VN.. 1604.. IVSN-322 1764 2708 1695 4294 5003

Negative 35° rhombic inserts.



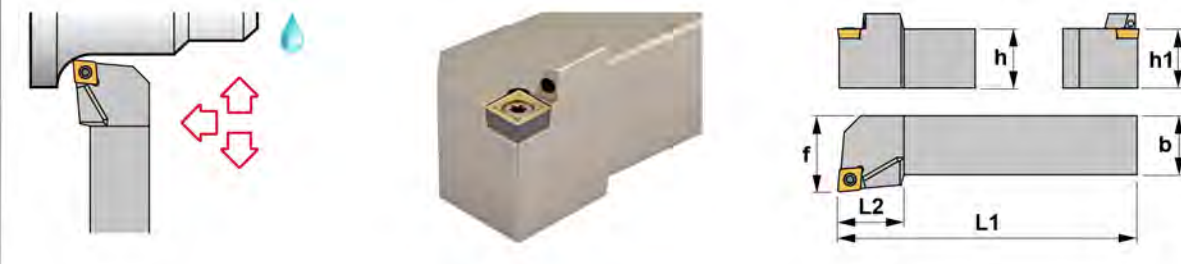
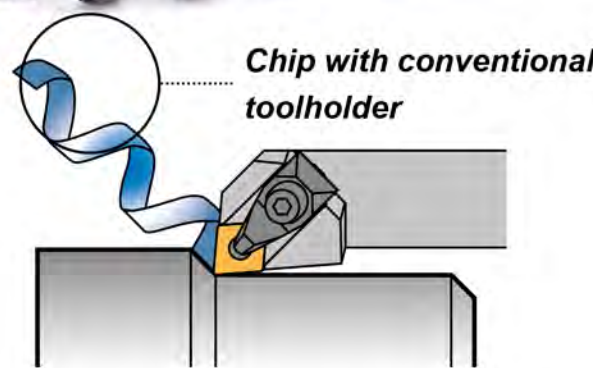
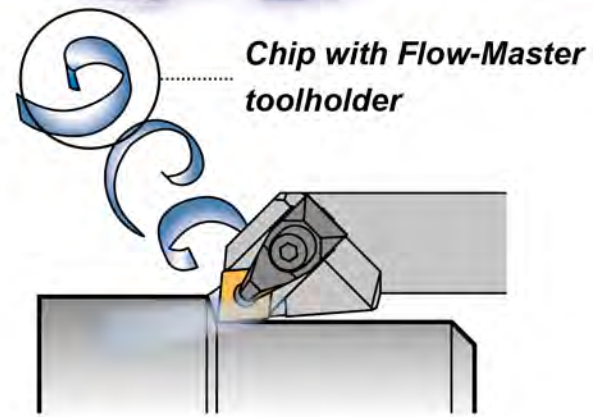
DWLN 95°-A

Reference	h=h1	b	L1	f	Insert size
DWLN R/L 2020 K06-A	20	20	125	25	WNMG 0604.. IWSN-322 1764 2708 1695 4294 5004
DWLN R/L 2020 K08-A	20	20	125	25	WNMG 0804.. IWSN-433 1766 2712 1696 4295 5004
DWLN R/L 2525 M08-A	25	25	150	32	WNMG 0804.. IWSN-433 1766 2712 1696 4295 5004
DWLN R/L 3232 P08-A	32	32	170	38	WNMG 0804.. IWSN-433 1766 2712 1696 4295 5004

Negative 80° trigon inserts.



flow-master



SCLC 95°-A

Reference	h=h1	b	L1	f	Insert size
SCLC R/L 2020 K09-A	20	20	125	25	CC.. 09T3.. 1240 5515
SCLC R/L 2525 M09-A	25	25	125	32	CC.. 09T3.. 1240 5515

Positive 7° clearance - 80° rhombic inserts.



SDJC 93°-A

Reference	h=h1	b	L1	f	Insert size
SDJC R/L 2020 K11-A	20	20	125	25	DC.. 11T3.. 1335 5516 3714 1750
SDJC R/L 2525 M11-A	25	25	150	32	DC.. 11T3.. 1335 5516 3714 1750

Positive 7° clearance - 55° rhombic inserts.



SVJC 93°-A

Reference	h=h1	b	L1	f	Insert size
SVJC R/L 2020 K11-A	20	20	125	25	VC.. 1103.. 1225 5507 - -
SVJC R/L 2525 M16-A	25	25	150	32	VC.. 1604.. 1335 5516 3718 1750

Positive 7° clearance - 35° rhombic inserts.





Improve your productivity

The Flow-Master coolant system works by delivering the machine coolant with maximum efficiency. The volume and speed of coolant coming out direct to the insert cutting edge improves machining performance.

Flow-Master tooling is extremely effective removing heat from the cutting edge, cooling the chips rapidly and helping to break it faster. Chips with poor heat removal are malleable and flexible, not breaking properly and adding extra heat to the cutting edge.

Performance improvement up to 50% with 70 bar pressure

■ Main Benefits

- Increased speeds and feeds
- Extended tool life
- Improved surface finish
- Better chip control and evacuation
- Easy system without spare parts

flow-master



Eines CANELA, S.A.

Pol. Ind. "Les Guixeres"
Torrent de Vallmajor, 88
08915 Badalona (Spain)
☎ +34. 93 399 85 61
Fax +34. 93 383 40 00
canela@canelatools.com

CANELA Werkzeuge GmbH

Bachstr, 16
73776 Altbach (Deutschland)
☎ +49. 07153 89 60 46
Fax +49. 07153 89 60 48
canela-altbach@web.de

CANELA, Lda.

Rua Fonte das Canas, 688
3720-571 Travanca-Oaz
(Portugal)
☎ +351. 256 66 08 60
Fax +351. 256 66 08 69
canelalda@canelatools.com

CANELA Herramientas, Ltda.

Portugal, 1410
Santiago de Chile (Chile)
☎ +56.2.5 54 53 47
Fax +56.2.5 51 29 88
chile@canelatools.com

CANELA Tools, SDN BHD

NO. 12&12A Jalan Bakawali, 38
Taman Johor Jaya
81100 Johor Bahru (Malaysia)
☎ +60.07 357 88 04
Fax +60.07 357 88 05
canelamy@canelatools.com

CANELA Corp.

100 S. Alloy Drive
Fenton, MI 48430 (USA)
☎ +1.810 750 51 12
Fax +1.810 750 51 17
canelacorp@canelacorp.com