



# TARGA® II Hollow Fiber Cartridges

## 8-inch Water Ultrafiltration Cartridges

### PRODUCT DESCRIPTION

<b>Membrane Chemistry:</b>	Proprietary Semi-Permeable Polyethersulfone
<b>Molecular Weight Cutoff:</b>	100,000
<b>Housing Shell/End Caps:</b>	Proprietary Polysulfone
<b>Fiber Support Netting:</b>	Polypropylene/Polyethylene
<b>Permeate Collection Tube:</b>	PVC
<b>Potting Material:</b>	Proprietary Compound
<b>Membrane Construction:</b>	Hollow Fiber
<b>Storage Solution:</b>	Glycerin
<b>Regulatory Status:</b>	Classified by UL to NSF/ANSI Standard 61 and in accordance with NSF/ANSI Standard 372

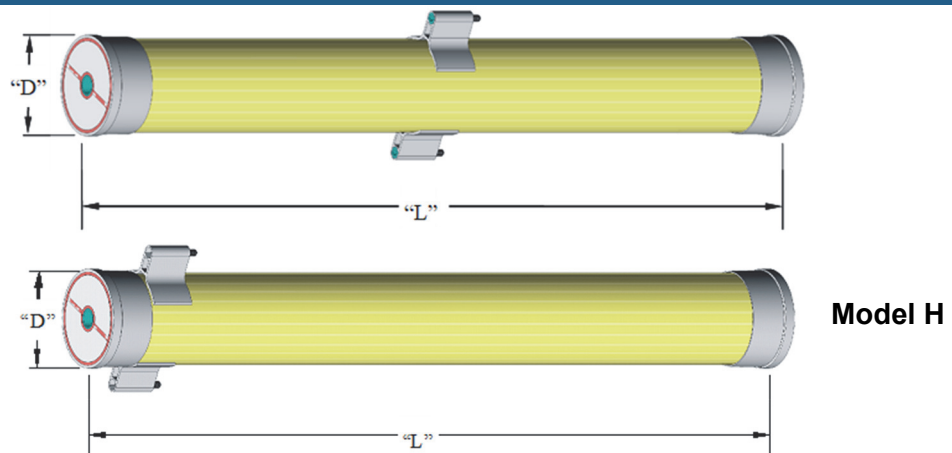
### PRODUCT SPECIFICATIONS

Part Number	Model	Fiber Diameter [Inch (mm)]	Membrane Area [ft <sup>2</sup> (m <sup>2</sup> )]	Production Range gpm (m <sup>3</sup> /hr)
0720425	TARGA® II 8048-35	0.035 (0.9)	346 (32.1)	9.6 - 20.4 (2.2 - 4.6)
0720426	TARGA® II 8072-35	0.035 (0.9)	544 (50.5)	15.1 - 32.1 (3.4 - 7.3)
0720427	TARGA® II 8H072-35	0.035 (0.9)	544 (50.5)	15.1 - 32.1 (3.4 - 7.3)

### OPERATING AND DESIGN INFORMATION\*

<b>Maximum Pressure (water):</b>	45 psi (3.0 bar) @ 104° F (40°C) or less
<b>Temperature Range:</b>	32°F (0°C) - 104°F (40°C)
<b>Maximum Production Transmembrane Pressure:</b>	30 psi (2.1 bar)
<b>Maximum Backflush Transmembrane Pressure:</b>	25 psi (1.4 bar)
<b>Allowable pH Range:</b>	1.5 - 13
<b>Maximum Total Chlorine @ 77° F (25° C) or lower:</b>	500 ppm @ pH >10
<b>Recommended Total Chlorine @ 77°F (25°C) or lower:</b>	200 ppm @ pH >10
<b>Maximum Backflush Total Chlorine @ 77°F (25°C) or lower:</b>	50 ppm @ pH >9

### NOMINAL DIMENSIONS



Model	Fiber Diameter (ID)		D		L	
	inches	(mm)	inches	(mm)	inches	inches
TARGA® II 8048-35	0.035	(0.9)	8.4	(213)	48	(1219)
TARGA® II 8072-35	0.035	(0.9)	8.4	(213)	72	(1829)
TARGA® II 8H072-35	0.035	(0.9)	8.4	(213)	72	(1829)

\*Dimensions are provided for reference only and should not be interpreted as accurate specifications.



**STORAGE GUIDELINES**

**Cartridge Storage Conditions:**

New cartridges are impregnated with glycerin. Glycerin should be removed from new cartridges before initial use with a rinse followed by a caustic wash and then a caustic/chlorine wash. See pre-startup cleaning instruction sheet packed with each cartridge shipment.

New cartridges should be stored in their original shipping containers and crates until ready for installation, as follows:

- Indoors, out of direct sunlight.
- At temperatures between 50 – 85 °F (10 – 30 °C).
- At relative humidity below 70%.
- In a horizontal position.

Used cartridges should be cleaned, rinsed and impregnated before storage with one of the following solutions.

- Glycerin @ 80 – 100% (best)
- Phosphoric acid @ pH 2 – 3
- Benzoic acid or sodium benzoate @ 1,000 ppm
- Sodium bisulfite or sodium metabisulfite @ 1,000 – 5,000 ppm

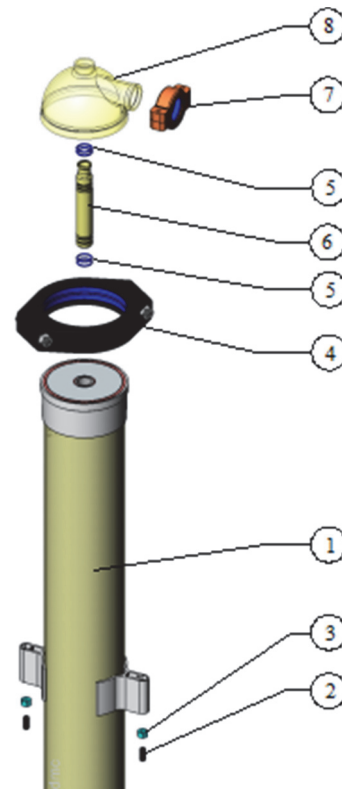
Cartridges stored in sodium bisulfite or sodium metabisulfite should be flushed with clean water and impregnated with fresh solution at six-month intervals. Once impregnated the cartridges should be left on the system with all valves closed or removed from the system and sealed in plastic bags. Storage conditions described above for new cartridges should be used for storage of used cartridges. Cartridges must be drained, rinsed and cleaned after storage per the pre-startup cleaning instruction sheet packed with each cartridge shipment.

**CARTRIDGE ASSEMBLY AND COMPONENTS**

Item	Description	Required
1	8" HF Cartridge	1 each
2	Leveling Hardware (Screw ½" X 13)	2 each
3	Leveling Hardware (Nut ½" X 13)	2 each
4	8" Coupling Set (gasket included)	2 each
5	O-Ring, Permeate Adapter	8 each
6	Permeate Adapter	2 each
7	2 ½" Coupling Set (gasket included)	2 sets
8	End Cap	2 each

**Kit Process Pass for 8" Cartridge**

KSS Part Number: 0220158



*The information contained in this publication is believed to be accurate and reliable, but is not to be construed as implying any warranty or guarantee of performance. We assume no responsibility, obligation or liability for results obtained or damages incurred through the application of the information contained herein. Refer to Standard Terms and Conditions of Sale and Performance Warranty documentation for additional information*

**Koch Separation Solutions, Inc.** 850 Main Street, Wilmington, MA 01887  
 Main: +1-978-694-7000 • Fax: +1-978-657-5208 • Toll Free: +1-888-677-5624

For complete contact information and listing of our global locations, visit [www.kochseparation.com](http://www.kochseparation.com)

©2020 Koch Separation Solutions, Inc. All rights reserved worldwide. For related trademark information, visit [www.kochseparation.com/legal](http://www.kochseparation.com/legal).