

# SPIRAPAK 4033-70K-VPP Module

*Spiral Ultrafiltration Module for Industrial Applications*

## PRODUCT DESCRIPTION

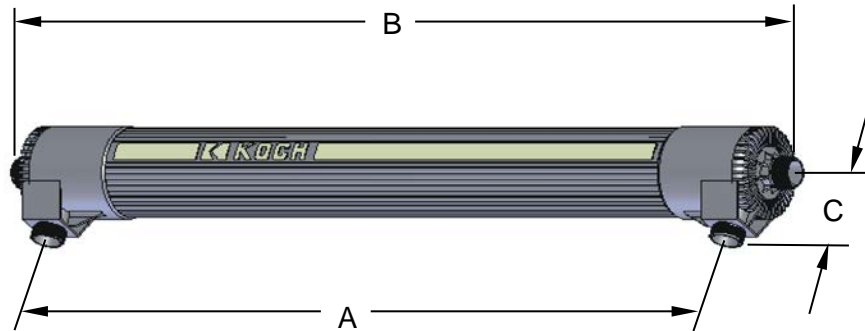
<b>KSS Part Number:</b>	0700790
<b>Membrane Chemistry:</b>	PVDF
<b>Membrane Type:</b>	Neutral charge, Molecular Weight Cutoff 70KD
<b>Membrane Area:</b>	55 ft <sup>2</sup> (5.1 m <sup>2</sup> )
<b>Construction:</b>	Spiral wound element with integrated PVC housing
<b>Seal:</b>	EPDM
<b>Feed Spacer Thickness:</b>	0.043" (1.09 mm)

## OPERATING AND DESIGN INFORMATION\*

<b>Maximum Inlet Pressure:</b>	80 psi @ 110°F (5.5 bar @ 43°C)
<b>Maximum Operating Temperature:</b>	125°F (52°C)
<b>Allowable pH – Continuous Operation:</b>	2 - 10 @ 125°F (52°C)
<b>Allowable pH – Short Term Cleaning:</b>	1.5 - 10.5 @ 125°F (52°C)
<b>Maximum Feed Side Pressure Drop:</b>	40 psi @ 125° F (2.8 bar @ 52°C)
<b>Maximum Permeate Pressure:</b>	5 psi (0.3 bar)

\*Consult KSS Process Engineering Group for specific information.

## NOMINAL DIMENSIONS



A		B		C		Working Weight		Permeate and Process Connections (Inches)
inches	(mm)	inches	(mm)	inches	(mm)	lbs.	(kg)	
37.0	(940)	43.9	(1,115)	2.5	(64)	45	(20)	1 ¼ NPSM



**STORAGE GUIDELINES**

**Membrane Incompatibility**

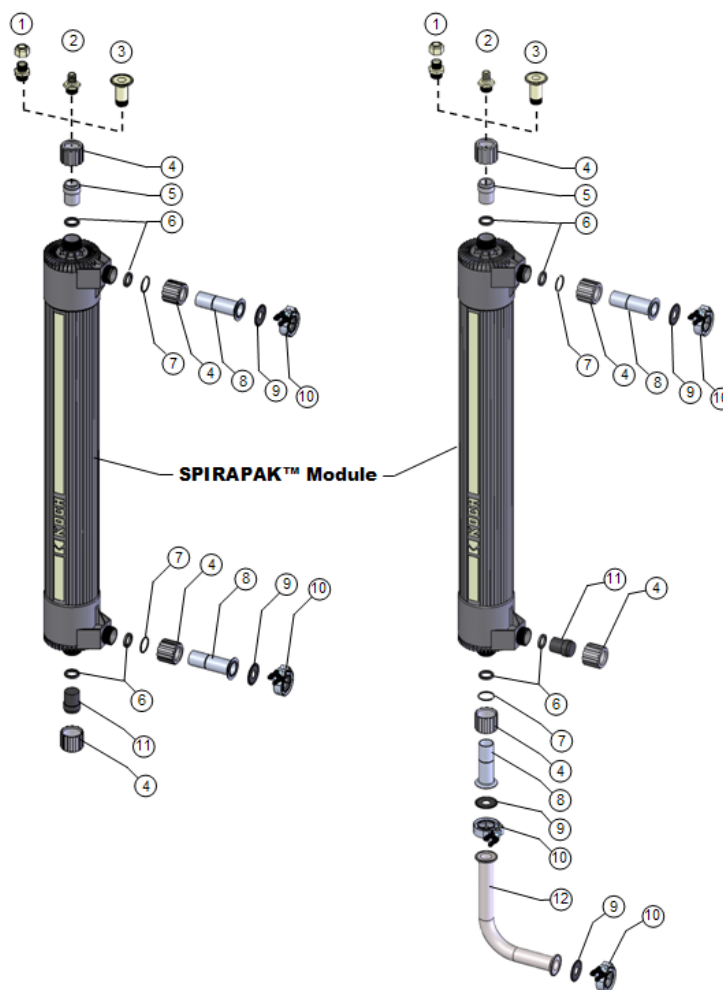
Prior to exposing the membrane to any chemical, the chemical should be reviewed by Koch Separation Solutions. Aside from the listed chemicals below, synthetic coolants, semi-synthetic coolants, kerosenes, naphtha, gasoline, floc polymers may affect membrane performance.

**Chemicals that should be avoided include the following:**

- **Aprotic Solvent** (e.g., Dimethyl Formamide, Dimethyl Acetamide, N-Methyl Pyrolidine, etc.)
- **Chlorinated Solvents** (e.g., Methylene Chloride, Chloroform, Carbon Tetrachloride, etc.)
- **Ketones** (e.g., Acetone, Diacetone Alcohol, etc.)
- **Silicones** or Silicone based Defoamers (e.g., Siloxane)

**OPTIONS OF SPIRAPAK MODULE ASSEMBLY**

Item	Description	Qty/ Unit	KPN
1	Permeate Connection Option #1 - 5/8" OD Rigid Tubing	1	0231208
2	Permeate Connection Option #2 - 1/2" ID Flex Hose	1	0231207
3	Permeate Connection Option #3 - 1 1/2" Sanitary Ferrule	1	0212300
4	Nut	4	0020281
5	Permeate Adapter	1	0030375
6	Seal Washer	4	0020370
7	Retaining Ring	2	0020310
8	Process Adapter	2	0216003
9	1 1/2" Sanitary Seal	2	0090400
10	1 1/2" Sanitary Coupling	1	0210465
11	Process Plug	1 or 2	0030040
12	Product Extension	1	0216002



**Service and Ongoing Technical Support**

Koch Separation Solutions, Inc. has an experienced staff of professionals available to assist end-users and OEMs for optimization of existing systems and support the development of new applications. Along with the availability of supplemental technical bulletins, Koch Separation Solutions, Inc. also offers a complete line of KOCHKLEEN® cleaning chemicals.



*The information contained in this publication is believed to be accurate and reliable, but is not to be construed as implying any warranty or guarantee of performance. We assume no responsibility, obligation or liability for results obtained or damages incurred through the application of the information contained herein. Refer to Standard Terms and Conditions of Sale and Performance Warranty documentation for additional information*