

P 200 A *Smart*

PALFINGER

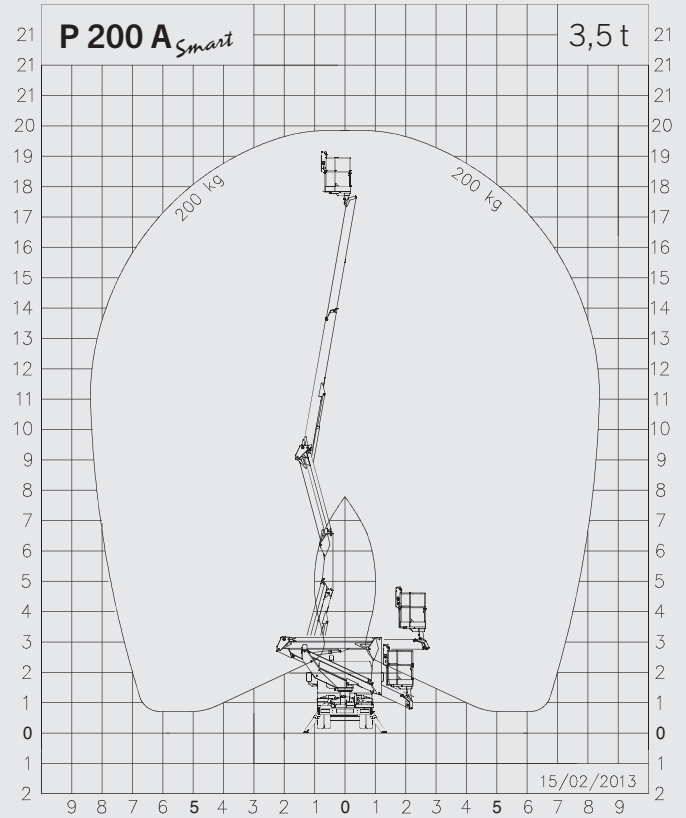
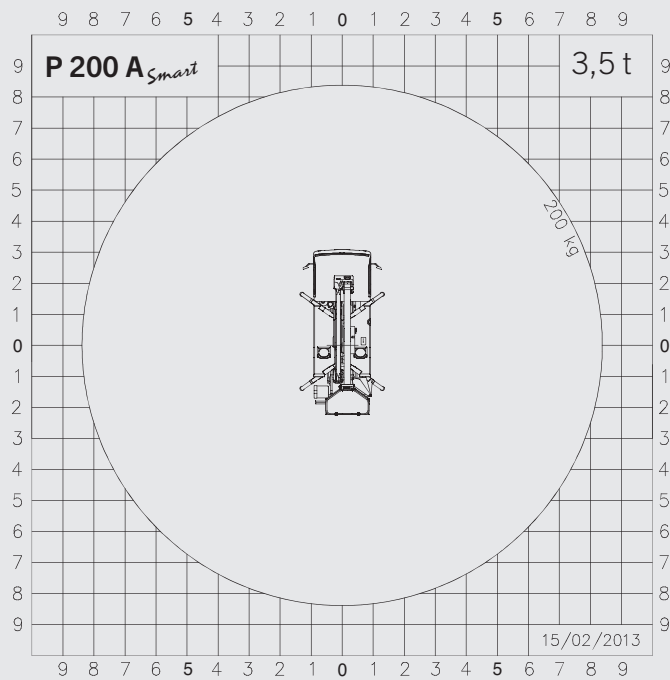
LIFETIME EXCELLENCE

**THERE IN A FLASH, COMPACT SET-UP
AND FLEXIBLE HEIGHT.**

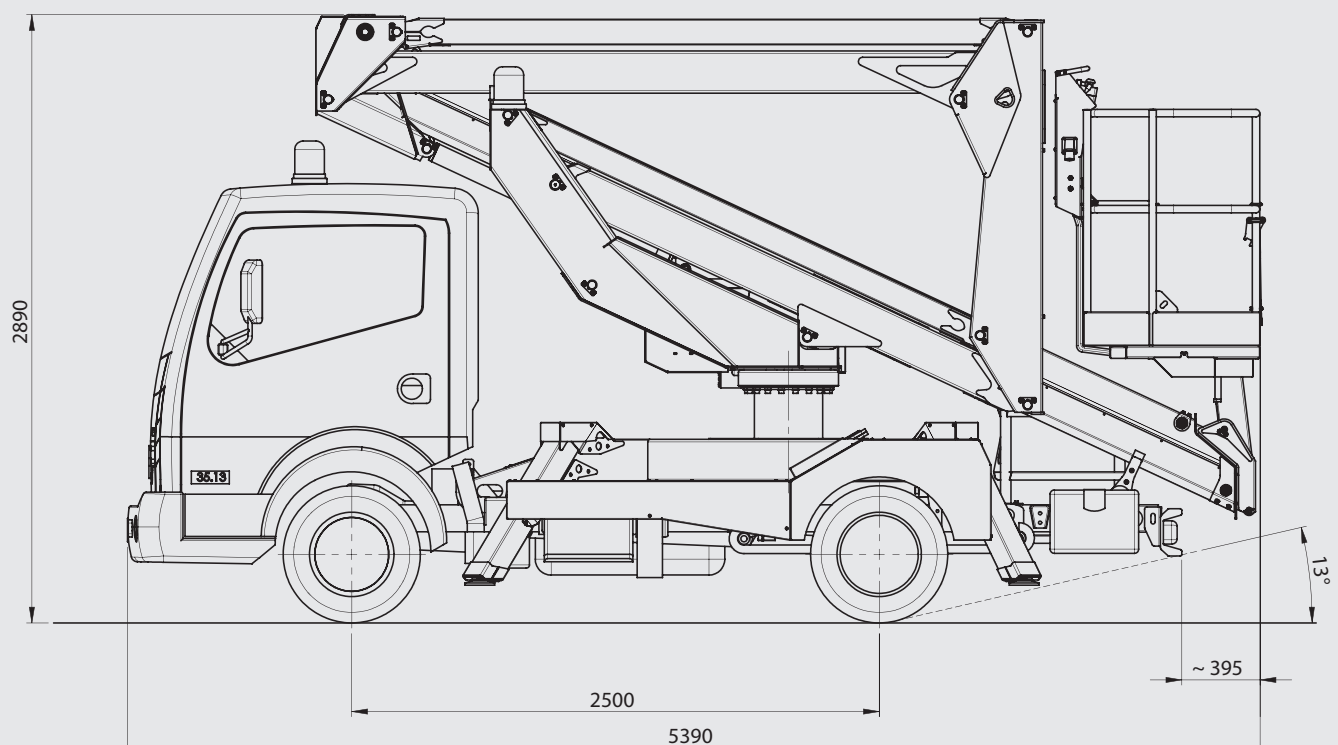


P 200 A_{Smart}

OUTREACH



DIMENSIONS





- Shortest machine in its class
- Small & clever for use in city centres
- Compact design and easy operation
- Fully hydraulic operation
- Ergonomic design
- Flexible access to heights thanks to combination of joint and telescope
- High manoeuvrability thanks to the extremely short wheelbase
- Safe working
- Professional PALFINGER quality

TECHNICAL SPECIFICATIONS

| | |
|------------------------------|--------------------|
| Max. working height | 19.8 m |
| Max. basket bottom height | 17.8 m |
| Max. outreach | 8.4 m |
| Angle of main boom | -25° to + 80° |
| Rotation angle of turntable | 370° |
| Rotation angle of basket | 2 x 90° |
| Basket load | stand. 200 kg |
| Size of basket | 1.4 x 0.85 x 1.1 m |
| Height in transport position | 2.89 m |
| Width in transport position | 2.1 m |
| Total length | 5.39 m |
| Total weight | 3320 kg |

OPTIONAL

| |
|--|
| GRP basket |
| 230 kg basket load with load moment limitation |
| 1000 V insulation |
| Side panels |
| Painting in customer's colours |
| Basket load measuring cell |
| 230 V electric pump |
| Working light on the basket |
| Flashing light on the turntable |

LIFETIME EXCELLENCE

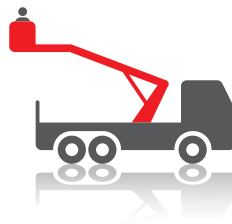
THE RESULT IS **PALFINGER ACCESS PLATFORMS** FEATURING THE MOST STATE-OF-THE-ART HEIGHT TECHNOLOGY THAT ACHIEVE ABSOLUTE PEAK PERFORMANCES, EVEN WHEN CONFRONTED WITH THE MOST DIFFICULT OF JOBS IN PRACTICE. **DEVELOPED FOR THE GLOBAL MARKET, DESIGNED FOR THE FUTURE.**

BETTER
SOLUTIONS

BETTER
EFFICIENCY

BETTER
ERGONOMICS

HIGHER VALUE
RETENTION



HIGHER
AVAILABILITY

HIGHER
SERVICEABILITY

BETTER
ECOLOGY

MORE
RELIABILITY

For further information please visit: www.palfinger.com/thebrand