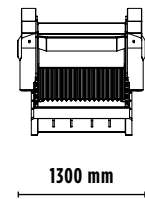
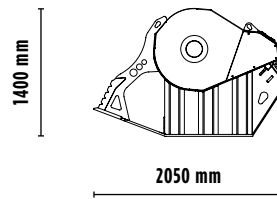
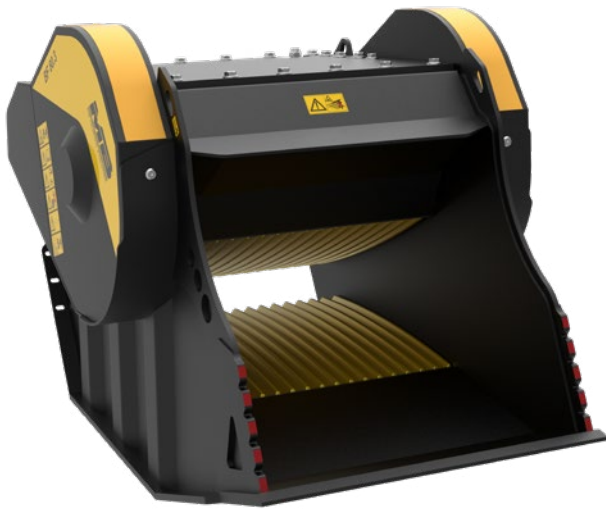



BF 80.3 S4

MB
THE CRUSHING EVOLUTION



SPECIFICATIONS

EQUIPMENT	 $\geq 18,5 \leq 29$ Ton
LOAD CAPACITY	0,70 m ³
OPENING DIMENSIONS	L 850 H 510 mm
OUTPUT SETTING	$\geq 15 \leq 135$ mm
DIMENSIONS	2050 x 1300 H 1400 mm
OIL FLOW	> 150 < 220 l/min.
PRESSURE	> 220 bar
WEIGHT	3 Ton

THEORETIC PRODUCTIVITY:

Size exit material	15 mm	20 mm	30 mm	40 mm	50 mm	60 mm	70 mm	80 mm	90 mm	100 mm	110 mm	120 mm	130 mm	135 mm
Productivity m ³ /h	10	11	13	15	17	19	21	23	25	27	29	31	33	34

AREAS OF APPLICATION



RECYCLING



URBAN
JOB SITES



ROAD WORKS



DEMOLITION



EXCAVATION



MINES



FOUNDRY



ENCLOSED
SPACES

The data provided above is not binding, as the manufacturer reserves itself the right to make improvements to its products at any time and with no advance notice. References to excavator weights are approximate and many may be subject to changes.

Rev. 2020 / 07

in f t You Tube you ku

WWW.MBCRUSHER.COM