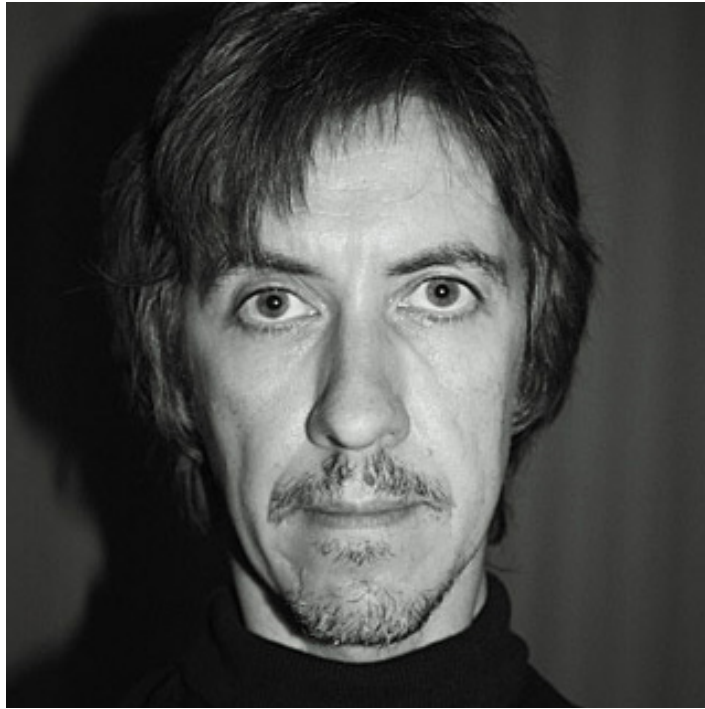


# JOS DEVRIENDT



Jos Devriendt (1964) lives and works in Ghent, Belgium. He creates simple, yet sensible objects that perform as devices to put lights at play. Jos Devriendt's lighting fixtures form a ceramic jacket over the lighting source. The direct light falls downwards while the indirect light is reflected in the space. The alternation of day and night, the rhythm of high tide and low tide and the passing of the seasons all leave an imprint on his work. The ongoing series Night and Day were a collection of mushroom-shaped lamps. "Their shapes are a concept that came about over time. People who are interested in sculptures don't make a point of looking at them at night, but I think it is important because you only have ten hours' light and the rest is darkness. It's not just about giving light, but about the idea that a sculpture can also have a life at night." Jos Devriendt defines himself as a "low tech designer" and his designs "functional sculptures". His work is presented in world famous art galleries; he recently staged his debut New York solo exhibition at Demisch Danant Gallery.

selection of art collection available at **am designs studio**  
more info via newsletter or mail at [studio@amdesigns.com](mailto:studio@amdesigns.com)